

THE MANSIONS

WIMBLEDON HILL PARK

THE MANSIONS

Berkeley
Designed for life

THE MANSIONS

WIMBLEDON HILL PARK

The definition of elegant living, this magnificent collection of one, two, three and four bedroom apartments and penthouses sits at the heart of this exclusive development, amid glorious green parkland, in one of the most desirable areas of London. These stylish, contemporary homes feature a residents' gymnasium, private cinema, 12-hour concierge service, gated underground parking and delightful courtyard gardens.

A HOME TO REMEMBER
A LIFESTYLE TO ENJOY



CONTENTS

PAGE 4

The Berkeley Difference

PAGE 6

A location that speaks for itself

PAGE 8

A short train ride to Central London

PAGE 12

At the heart of South West London

PAGE 14

Enjoy the village lifestyle

PAGE 22

A place in the making

PAGE 24

Surrounded by nature

PAGE 26

Superb resident facilities

PAGE 38

Apartment specification

PAGE 40

Penthouse specification

PAGE 43

Floorplans

PAGE 98

Designed to high sustainability standards

PAGE 99

A commitment to the future

PAGE 100

Contact details



THE BERKELEY DIFFERENCE

We want to ensure that you are happy with every aspect of your new home, so we look after our customers at every stage with expert advice, attention to detail and continuous communication. From exchange of contracts, your dedicated Berkeley Customer Relations Team will help with any questions you may have.

HERE IS WHAT YOU CAN EXPECT:

- From the day you reserve until the day you complete we'll update you regularly on progress
- Sustainability is high on any responsible builder's agenda. We promise to fully communicate the environmental features of our developments to all of our customers
- Our Customer Relations Manager will present a selection of designer-conceived colour palettes to help you find the interior finish that most suits your style
- We'll meet you at the development to demonstrate all the functions and facilities of your new home and will present you with your own bespoke guide
- We personally hand over your key on completion day and make sure everything is to your satisfaction
- The two-year warranty with 24-hour emergency service has a dedicated customer service telephone number, and from the 3rd to the 10th year you'll also have the added security protection of the Premier Guarantee
- Finally we will contact you throughout your buying journey to ensure that everything progresses smoothly and you are kept up to date with regular information

DESIGNED FOR LIFE

Our customers are at the heart of all our decisions. We aim to understand their needs and consistently meet or exceed their expectations. The service we provide is professional, efficient and helpful to make the home buying process as straightforward and enjoyable as possible. Our levels of customer service aim to be comparable to other top brands.

CUSTOMER SERVICE IS OUR PRIORITY

All our customers are provided with a commitment that when they buy a new home from Berkeley they can be safe in the knowledge that it is built to very high standards of design and quality, has low environmental impact and that they will enjoy an exceptional customer experience. Each customer receives tailored information relating to their purchase and has a dedicated point of contact throughout the customer journey.

QUALITY IS AT THE HEART OF EVERYTHING WE DO

At Berkeley, quality takes precedence, from choosing the right location and style of home, to the construction processes we practice, the materials we use and the specifications we put into our homes. For extra peace of mind, in addition to the 10-year warranty all new homes receive, Berkeley operates a 2-year policy with dedicated Customer Service teams on hand 24 hours a day to deal with enquiries quickly and effectively.

UNPARALLELED CHOICE OF HOMES IN THE MOST SOUGHT AFTER LOCATIONS

As one of the UK's leading house builders, we are able to offer our customers an unrivalled choice of property location, size and type.

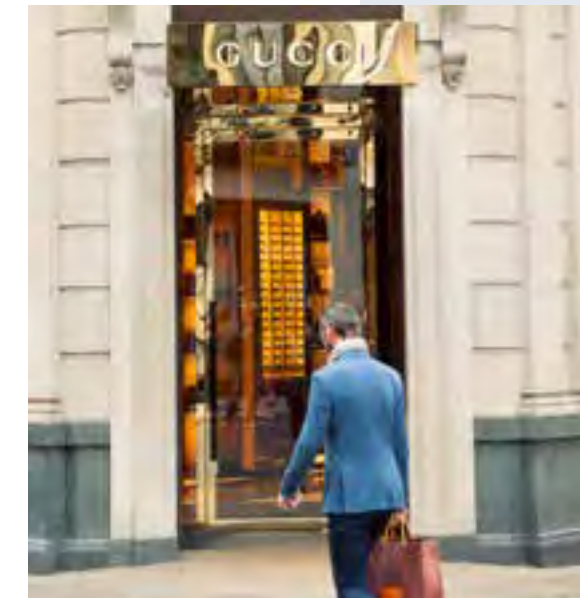
From city penthouses to country retreats, modern studio apartments to traditional family homes, you will find the perfect home to match your requirements. Our homes are also built in some of Britain's most desirable locations from market towns and rural villages to major towns and cities, and countryside to the coast—we build in the locations you want to live.



A LOCATION THAT SPEAKS FOR ITSELF

The Mansions is located in one of London's leafiest suburbs. With an inspiring outlook across open parkland, it is also close to Wimbledon Common and Cannizaro Park, both renowned beauty spots ideal for walking and sports. The world-famous All England Tennis Club and Wimbledon village centre, with its excellent shops and amenities, are just a few minutes away.

A SHORT TRAIN RIDE TO CENTRAL LONDON



All the excitement and pleasure of the Capital's vibrant centre are within easy reach. What could be better than a day in town, enjoying breakfast at the Wolseley, afternoon tea at Fortnum and Mason and dinner at The Ritz.

In between, browse the luxury shops in Burlington Arcade, or take in an exhibition at the Royal Academy of Arts. Head to Bond Street for designer fashion. All the major labels can be found here – Tiffany, Asprey, Hermès, Louis Vitton, Chanel and many more.

Close by on Oxford Street is the iconic department store, Selfridges. For eclectic boutique shopping, the King's Road in Chelsea offers intriguing possibilities.

Of course, London is best known for its culture, history and nightlife. From the museums in South Kensington, to the glittering theatres of the West End, classical opera and ballet in Covent Garden, arthouse cinemas and ultra-hip nightclubs – everything the Capital has to offer is easily accessed by train, tube or car.



DISCOVER
WIMBLEDON

AT THE HEART OF SOUTH WEST LONDON

The Mansions is conveniently located for travel into Central London by car or public transport. You can be shopping in Knightsbridge, dining in Mayfair or watching a show in the West End within an hour of leaving your home.

Wimbledon Station is served by both National Rail and the District underground line and offers good access to Central London and the South West. The Mansions is also close to the A3 allowing residents quick access to London Heathrow and Gatwick airports.

Driving from The Mansions



- Raynes Park Station 6 mins
- Wimbledon Station 7 mins
- Heathrow Airport 34 mins
- Gatwick Airport 48 mins

The National Rail from Raynes Park Station (18 minute walk)



- Clapham Junction 11 mins
- Waterloo 23 mins
- Richmond 26 mins
- Victoria 26 mins

The Underground from Wimbledon Station



- South Kensington 24 mins
- Sloane Square 26 mins
- Paddington 28 mins
- Knightsbridge 28 mins

The Bus from The Mansions



- Wimbledon Village 9 mins
- Wimbledon Common 10 mins
- Wimbledon Station 12 mins
- Raynes Park 13 mins

Map not to scale and is indicative only. All travel times are approximate only and taken from www.google.co.uk/maps and www.tfl.gov.uk. The Mansions is 1 mile from Raynes Park Station and 1.7 miles from Wimbledon Underground Station.



ENJOY THE VILLAGE LIFESTYLE

Wimbledon has a distinctive village charm that is a pleasure to explore and discover. With many pavement cafés and relaxed restaurants, it is a community made for catching up with friends and spending time with family. The boutique shops are a delight – you'll find everything from traditional grocers bursting with fresh market produce, to highly original interiors outlets.

For anyone who enjoys sport, Wimbledon is the ideal location. Synonymous with tennis, there are sports clubs and activities to appeal to all tastes, including two golf clubs and a rugby ground. It's easy to get out into the great outdoors too, for bracing walks, cycling or horseback rides on the Common or through the ancient Royal Park at Richmond.



High Street, Wimbledon Village



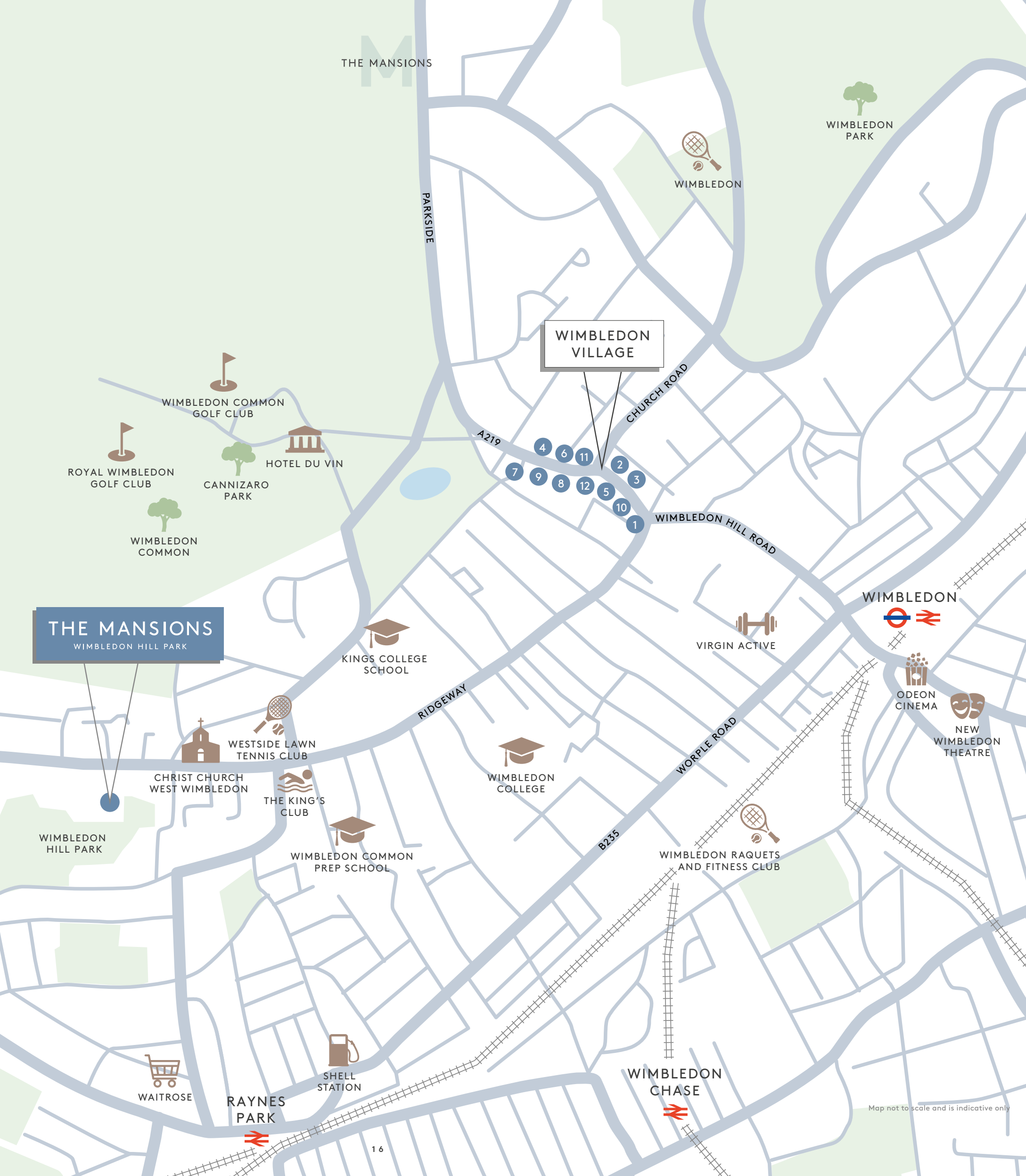
Wimbledon Common



High Street, Wimbledon Village



High Street, Wimbledon Village



OUT & ABOUT

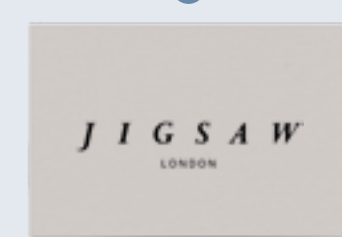
1



2



3



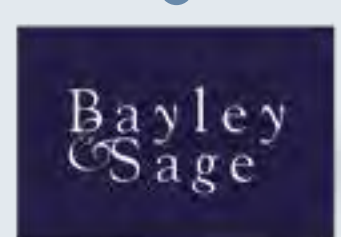
4



5



6



7



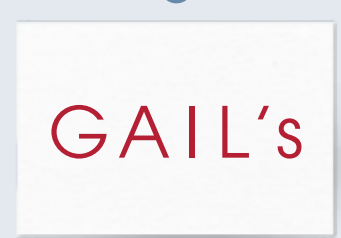
8



9



10



11



12





A FIRST-CLASS EDUCATION

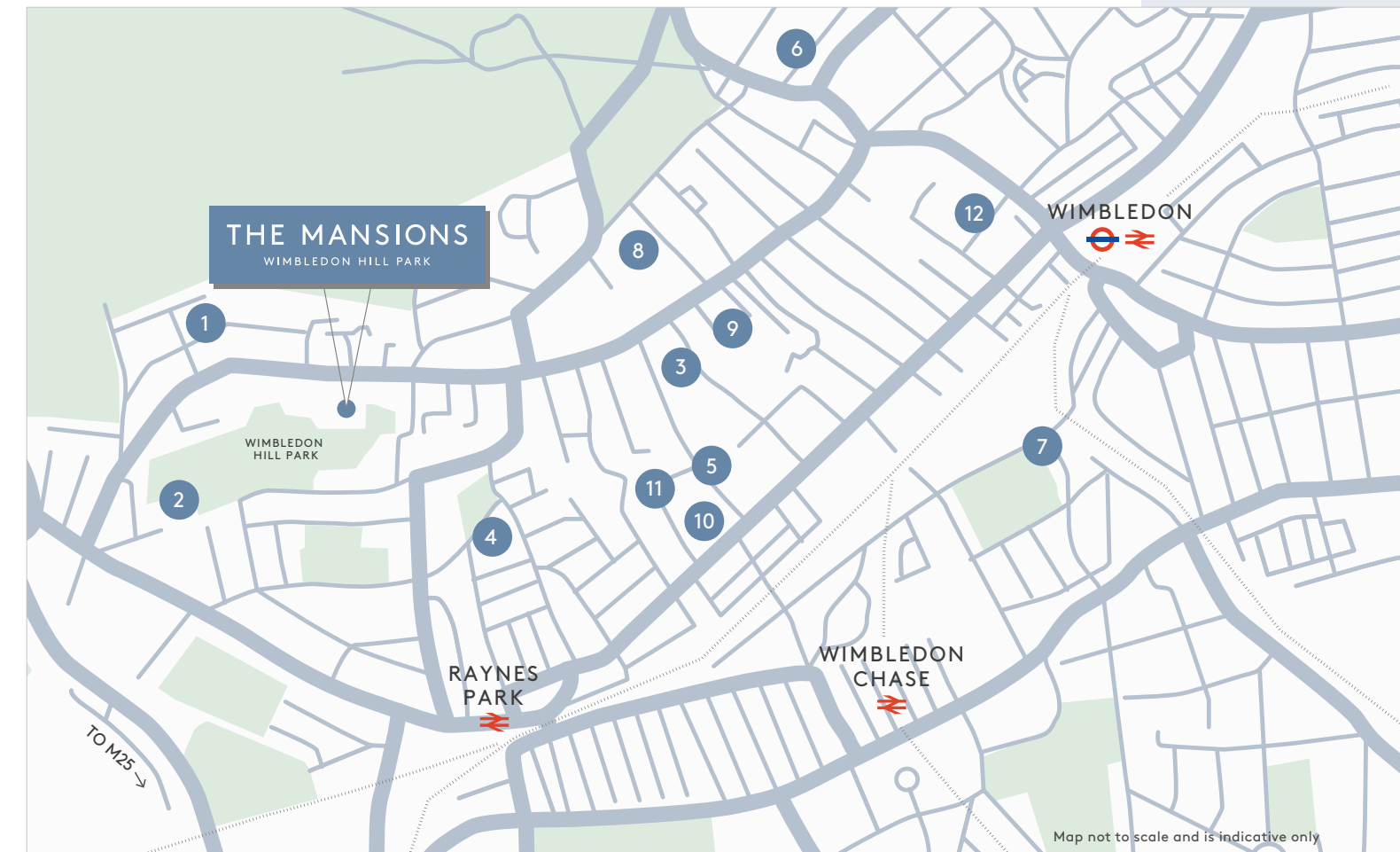
The Mansions is conveniently positioned close to many of West London's best schools. Ursuline High School and Hall School Wimbledon, both rated outstanding by Ofsted, are located within 5 minutes' drive of the development.

The area is also well served by private schools for all stages of development, with seven preparatory schools and five secondary schools and colleges, including King's College School, which was voted 'Best Boys or Co-educational Independent School of the Year' in The Sunday Times Parent Power survey in November 2018.

LOCAL SCHOOLS

Preparatory and Primary Schools		Distance	Walking time
1	The Rowans Preparatory School	0.2 mile	5 mins
2	St Matthews C of E Primary School	0.6 mile	12 mins
3	Donhead Preparatory School	0.8 mile	16 mins
4	Hollymount School	0.8 mile	16 mins
5	Ursuline Preparatory School	0.8 mile	16 mins
6	The Study Preparatory School	1.1 miles	22 mins
7	Dundonald Primary School*	1.5 miles	31 mins
Secondary Schools and Colleges			
8	King's College School	0.6 mile	11 mins
9	Wimbledon College	0.7 mile	14 mins
10	Hall School Wimbledon* (Primary & Senior)	0.9 mile	19 mins
11	Ursuline High School*	0.9 mile	19 mins
12	Wimbledon High School	1.4 miles	29 mins

All time estimates are approximate only. Source: Google Maps
*Ofsted ratings are outstanding for these schools at time of print





DISCOVER AN INNER
ELEGANCE



COPSE HILL

LANESBOROUGH HOUSE

COWLEY HOUSE

CAR PARK ENTRANCE

MORLEY PARK

PAKENHAM HOUSE

HENRIETTA HOUSE

PLAY SPACE

PAXTON HOUSE

A PLACE IN THE MAKING

The Mansions comprise of five classic apartment houses. The central building, Henrietta House, faces elegant courtyard gardens to the North, with the four other buildings discreetly positioned around it. Externally, the buildings echo classical Georgian style with a distinctive contemporary twist.

The sitemap is indicative only and not to scale. In line with our policy of continuous improvement we reserve the right to alter the layout, building style, landscaping and specification at anytime without notice.



SURROUNDED BY NATURE

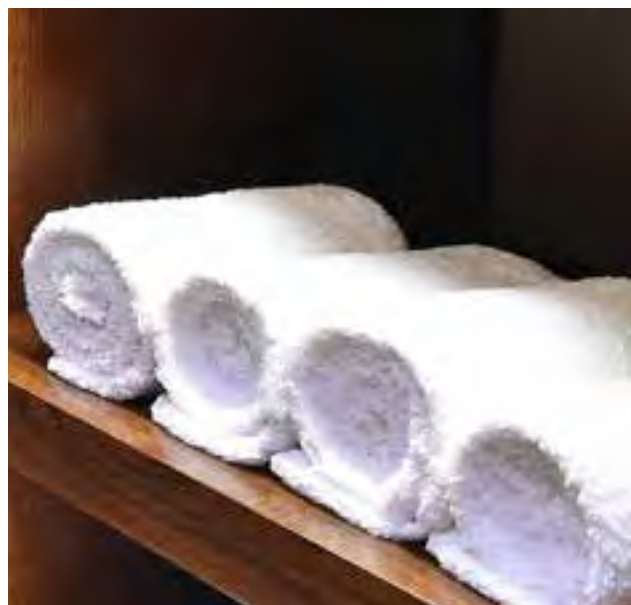
The Mansions is bordered by acres of protected parkland, offering residents the best of both worlds – a London location with easy access to all the Capital’s amenities.

Morley Park, a twelve-and-a-half acre park, renovated by Berkeley, comprises playing fields, a pavilion and extensive woodland and meadows to enjoy walking, taking in nature and relaxing.

The private residents’ courtyard includes flowers, herbs and tree species, such as golden marguerite, bright yellow erysimum, lavender, escallonia and viburnum which attracts an array of wildlife for residents to enjoy.



Photography of parkland is indicative only



SUPERB RESIDENT FACILITIES

When life is hectic a little help can mean a lot. Residents at The Mansions can enjoy a range of on-site facilities designed to offer the perfect lifestyle and enhance their wellbeing. The fully-equipped private gym is convenient and accessible.

A luxury private cinema is available for viewing your favourite films or box-sets, while the friendly 12-hour concierge service is available to assist with everyday tasks.



Henrietta House is an elegant building at the heart of The Mansions. Influenced by 19th century English architecture, looking out onto a beautiful landscaped courtyard with a feature water fountain.



A sense of exclusive village life takes shape with luxury homes subtly set in beautifully landscaped gardens and walkways. With mature trees and box hedges as well as floral influences, this is a colourful setting all year round.



Spacious and light-filled by day, warm and cosy by night, the living, kitchen and dining areas are the heart of your home. Full-height doors lead out onto generous balconies or terraces, making the perfect space for entertaining.

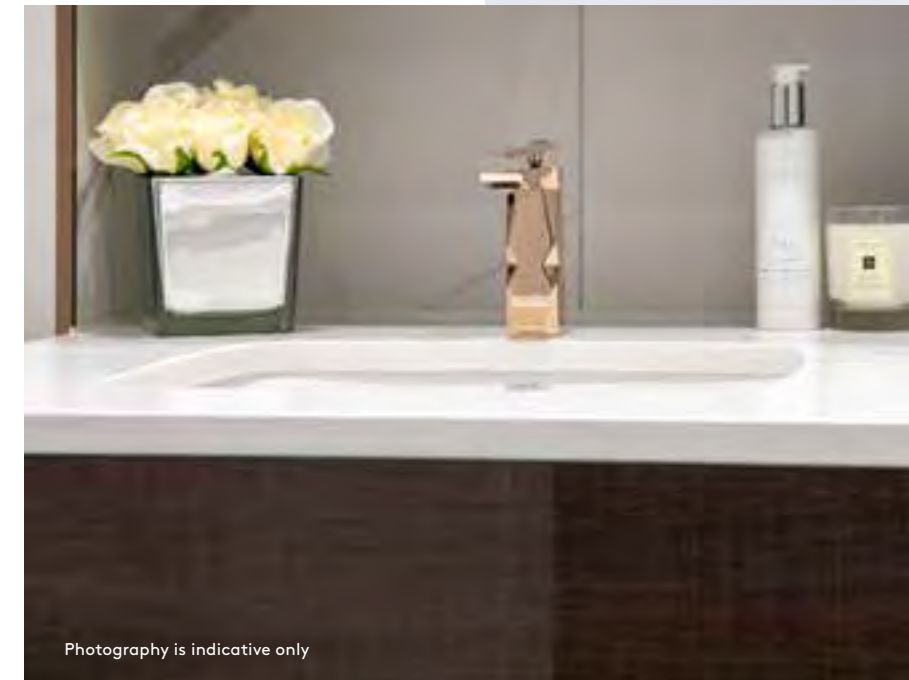


Sumptuous and luxurious bedrooms are a haven of peace for relaxing and unwinding at the end of a busy day.





Computer Generated Image of The Mansions is indicative only



Photography is indicative only

Luxury fixtures and fittings are complemented by marbled ceramic tiles, stone tops, low level vanity units and subtle concealed lighting.



APARTMENT SPECIFICATION



Photography is indicative only

KITCHENS

- Individually designed layouts
- 1 bowl sink and mixer tap
- Composite stone work surfaces
- Full height splashback
- LED ceiling downlights and concealed LED lighting to high-level wall cabinets
- Siemens induction hob
- Integrated extractor
- Siemens single oven
- Siemens combination microwave oven
- Siemens integrated fridge/freezer
- Built-in wine cooler
- Siemens integrated multi-function dishwasher
- Integrated recycling bin

BATHROOMS & EN SUITES

- Low-level vanity unit with under counter basin
- High-level fixed mirror or cabinet, subject to layout
- Display shelving with concealed lighting
- Deck mounted basin mixer
- WC pan, soft-close seat, concealed cistern and dual flush
- Electric heated towel rail
- Extract ventilation to outside
- Recessed LED downlights

Where baths apply:

- Bath with tiled bath panel
- Integrated bath filler and waste overflow
- 3-way diverter and mixer valves to bath
- Shower head with separate hand shower
- Glass shower screen

Where showers apply:

- Shower area with glass shower screen and door
- Shower head and separate hand shower
- 2-way diverter and mixer valves to shower area

UTILITY AND CLOAKS CUPBOARD

- Siemens freestanding combination washer/dryer
- Coat rail with shelf, subject to layout

GENERAL

- Single step coffer profile to living area and master bedroom
- Dressing room or fitted wardrobe arrangement to master suite to include internal fittings; rails, shelves and drawers
- Wet underfloor heating
- Electric underfloor heating to all wet areas only
- Central heating system
- Mains supply smoke detectors
- Video entry phone system
- Multi-point locking and spy hole to entrance door
- USB socket outlets to kitchen and bedrooms
- Pre-wired for future pendant lighting to living area and master bedroom
- TV points wired for terrestrial and SKY to living area and master bedroom
- Telephone and CAT 5E data points provided to living room and master bedroom
- Hyperoptic and BT connection provided

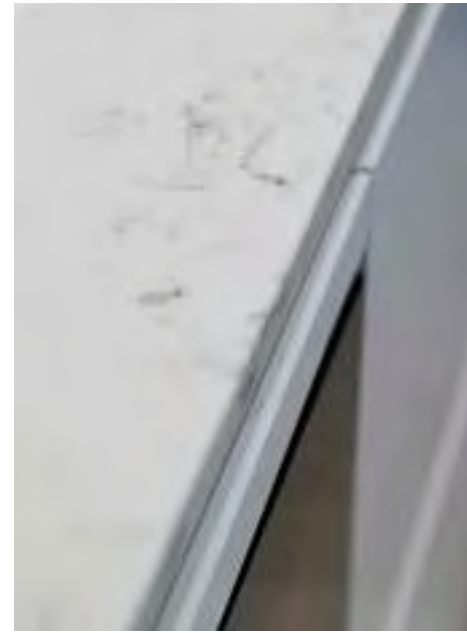
EXTERNALS

- External lighting to balconies or terraces
- Water supply to garden apartments only
- Power supply to garden apartments only

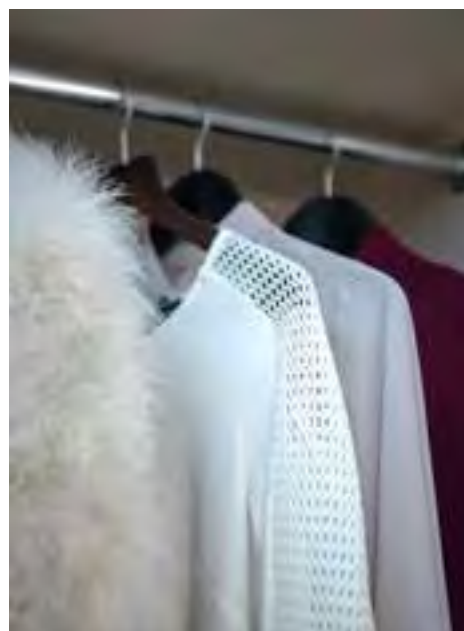
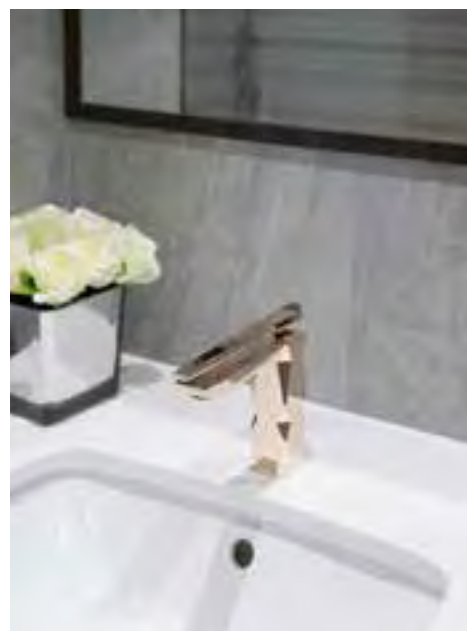
MANAGEMENT

A managing agent will be appointed to manage the operation and maintenance of communal areas and facilities and to collect service charge payments from property owners, which will be used to meet the costs of managed services

Sales specification based upon a typical 2 bedroom apartment. Your attention is drawn to the fact that it may not be possible to provide the branded products as referred to in the specification. In such cases, a similar alternative will be provided. Berkeley reserves the right to make these changes as required.



PENTHOUSE SPECIFICATION



Photography is indicative only and is subject to change

KITCHENS

- Individually designed layouts
- 1 bowl sink and mixer tap
- Composite stone work surfaces
- Full height splashback
- LED ceiling downlights and concealed LED lighting to high-level wall cabinets
- Integrated extractor
- Miele induction hob
- Miele single oven
- Miele combination microwave oven
- Miele integrated fridge / freezer
- Built-in wine cooler
- Miele integrated multi-function dishwasher
- Integrated recycling bin

BATHROOMS & EN SUITES

- Low-level vanity unit with under counter basin
- High-level fixed mirror or cabinet, subject to layout
- Display shelving with concealed lighting
- Deck mounted basin mixer
- WC pan, soft-close seat, concealed cistern and dual flush
- Electric heated towel rail
- Extract ventilation to outside
- Recessed LED downlights

Where baths apply:

- Bath with tiled bath panel
- Integrated bath filler and waste overflow
- 3-way diverter and mixer valves to bath
- Shower head with separate hand shower
- Glass shower screen

Where showers apply:

- Shower area with glass shower screen and door
- Shower head and separate hand shower
- 2-way diverter and mixer valves to shower area

UTILITY AND CLOAKS CUPBOARD

- Miele freestanding washing machine, subject to layout
- Miele freestanding tumble dryer, subject to layout
- Coat rail with shelf, subject to layout

CLOAKROOM**

- WC pan, soft-close seat, concealed cistern and dual flush
- Low-level vanity unit with undercounter basin
- Deck mounted basin mixer
- High-level fixed mirror
- Display shelving with concealed lighting

GENERAL

- Single step coffer profile to living area and master bedroom
- Dressing room or fitted wardrobe arrangement to master suite to include internal fittings; rails, shelves and drawers
- Fitted wardrobe arrangement to second bedroom to include internal fittings; rails and shelves
- Wet underfloor heating
- Electric underfloor heating to wet areas only
- Central heating system
- Comfort cooling to principal rooms
- Mains supply smoke detectors
- Video entry phone system
- Multi-point locking, letter plate and spy hole to entrance door
- USB socket outlets to kitchen and bedrooms
- Pre-wired for future pendant lighting to living area and master bedroom
- TV points wired for terrestrial and SKY to living area and master bedroom
- Telephone and CAT 5E data points provided to living room and master bedroom
- Hyperoptic and BT connection provided

EXTERNALS

- External lighting to balconies or terraces

MANAGEMENT

A managing agent will be appointed to manage the operation and maintenance of communal areas and facilities and to collect service charge payments from property owners, which will be used to meet the costs of managed services

** Subject to layouts

Sales specification based upon a typical penthouse apartment. Your attention is drawn to the fact that it may not be possible to provide the branded products as referred to in the specification. In such a case, a similar alternative will be provided. Berkeley reserves the right to make these changes as required.



THE MANSIONS
FLOORPLANS



HENRIETTA HOUSE

APARTMENT FINDER

APARTMENT NO.	BEDROOMS	LEVEL	PAGE NO.
B1	2	Upper Garden Level	50
B2	3	Upper Garden Level	54
B3	3	Upper Garden Level	54
B4	2	Upper Garden Level	50
B5	1	Ground Level	48
B6	2	Ground Level	52
B7	2	Ground Level	51
B8	2	Ground Level	53
B9	2	Ground Level	53
B10	2	Ground Level	51
B11	2	Ground Level	52
B12	1	Ground Level	48
B13	1	First Level	49
B14	3	First Level	55
B15	2	First Level	51
B16	2	First Level	53
B17	2	First Level	53
B18	2	First Level	51
B19	3	First Level	55
B20	1	First Level	49
B21	1	Second Level	49
B22	3	Second Level	55
B23	3	Second Level	56
B24	3	Second Level	56
B25	3	Second Level	55
B26	1	Second Level	49
B27 Penthouse	4	Third Level	57
B28 Penthouse	4	Third Level	57

SITE PLAN



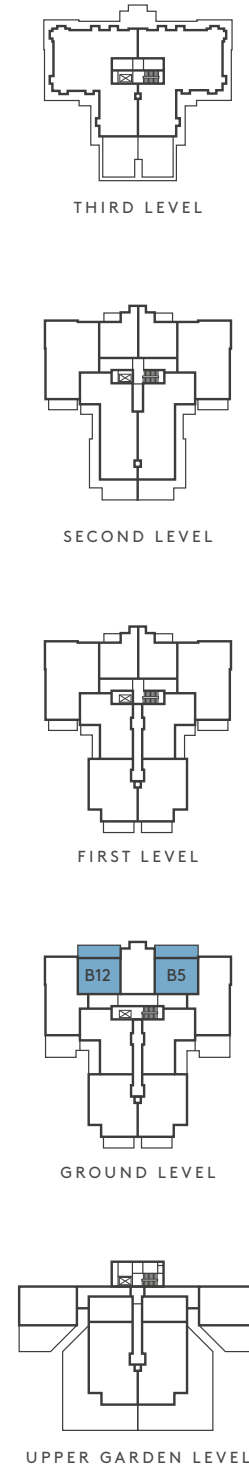
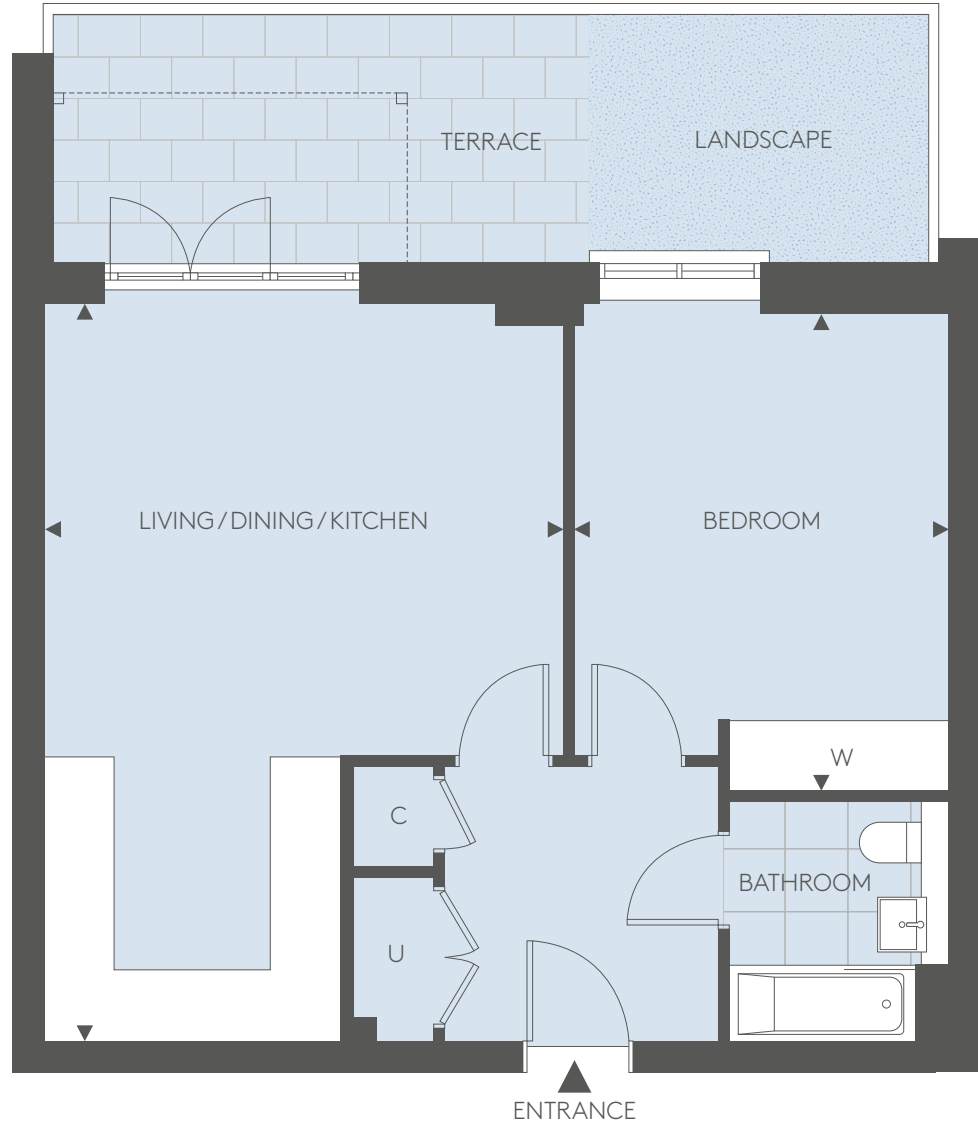
HENRIETTA HOUSE

SOUTH ELEVATION



APARTMENTS B5 & B12*

ONE BEDROOM APARTMENT



*APARTMENT B12 IS AS ABOVE BUT HANDED

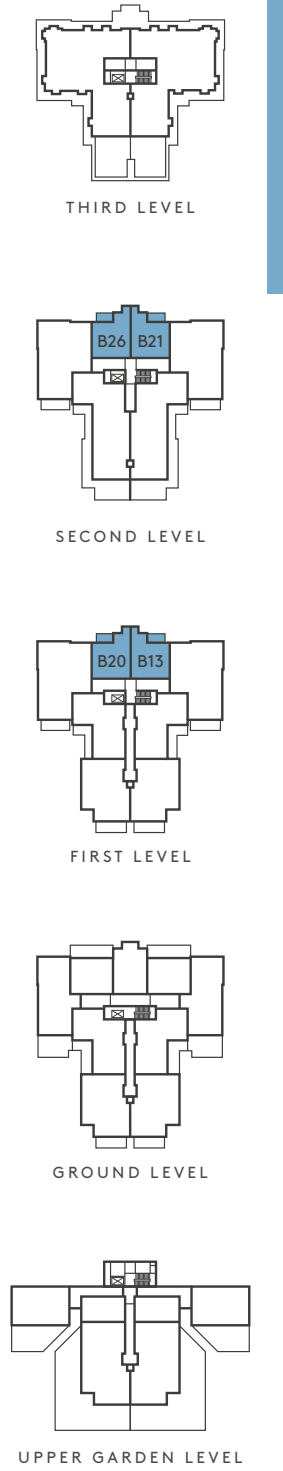
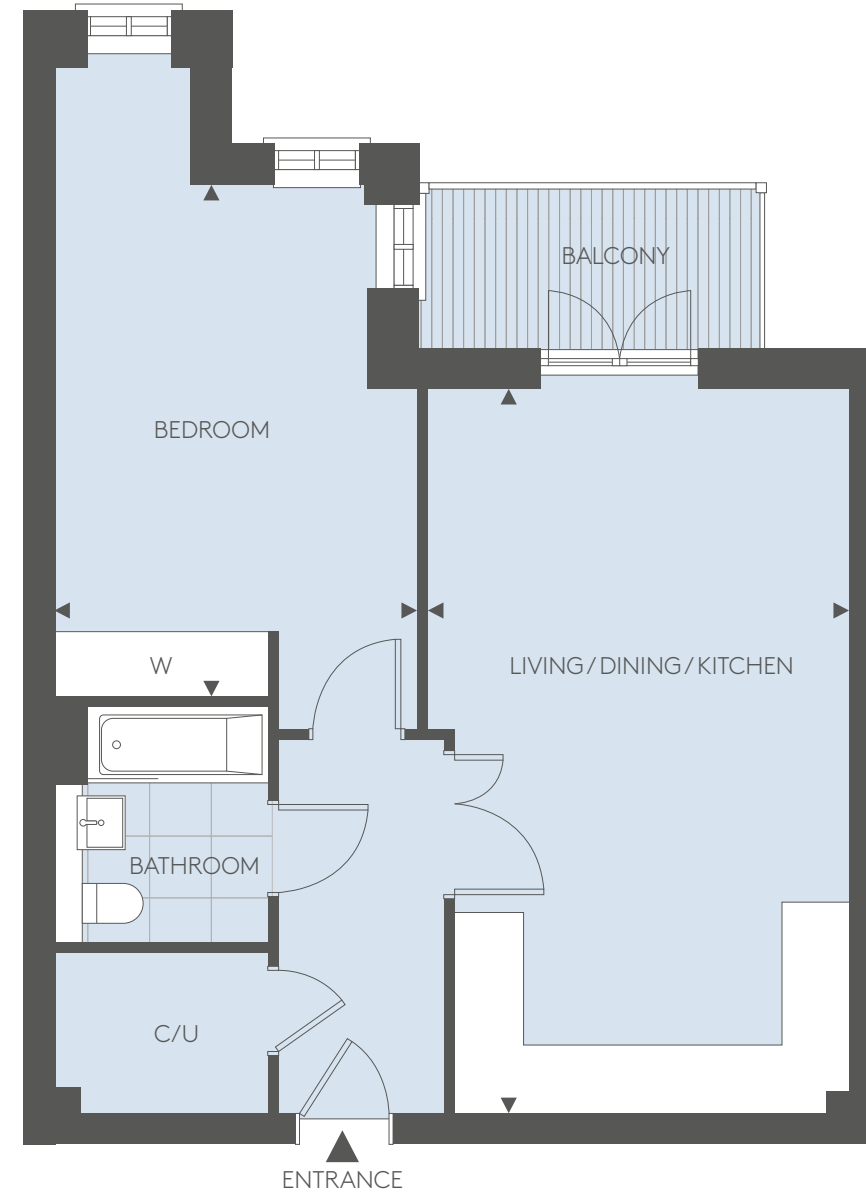
DIMENSIONS	56.3 SQ M	606 SQ FT	LOCATION
LIVING / DINING / KITCHEN	4.76M X 6.75M	15' 7" X 22' 2"	
BEDROOM	3.43M X 4.46M	11' 3" X 14' 8"	

◄► - Measurement Points C - Cupboard U - Utility W - Wardrobe

Floorplans shown for The Mansions are for approximate measurements only. Exact layouts and sizes may vary. All measurements may vary within a tolerance of 5%. The dimensions are not intended to be used for carpet sizes, appliance sizes or items of furniture. Floorplans are sized to fit each page and are not to scale.

APARTMENTS B13, B20*, B21 & B26*

ONE BEDROOM APARTMENT



*APARTMENTS B20 & B26 ARE AS ABOVE BUT HANDED

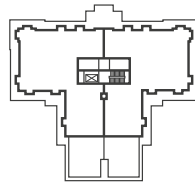
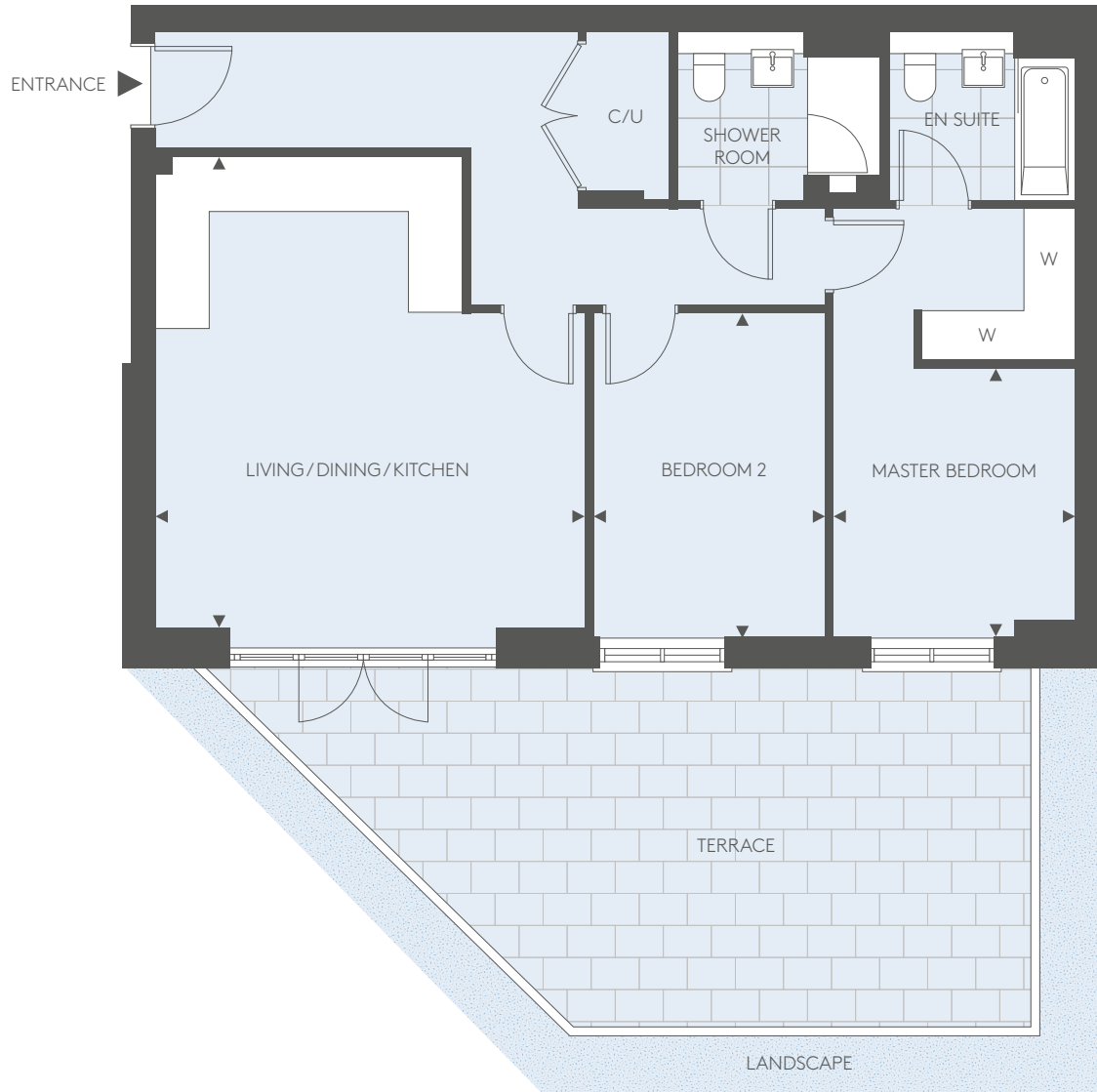
DIMENSIONS	57.7 SQ M	621 SQ FT	LOCATION
LIVING / DINING / KITCHEN	3.71M X 6.76M	12' 2" X 22' 2"	
BEDROOM	3.40M X 4.78M	11' 2" X 15' 8"	

◄► - Measurement Points C - Cupboard U - Utility W - Wardrobe

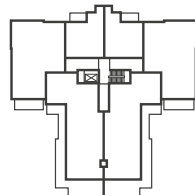
Floorplans shown for The Mansions are for approximate measurements only. Exact layouts and sizes may vary. All measurements may vary within a tolerance of 5%. The dimensions are not intended to be used for carpet sizes, appliance sizes or items of furniture. Floorplans are sized to fit each page and are not to scale.

APARTMENTS B1 & B4*

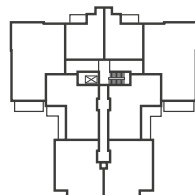
TWO BEDROOM APARTMENT



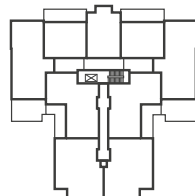
THIRD LEVEL



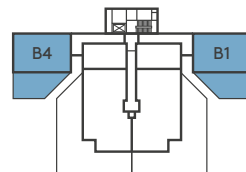
SECOND LEVEL



FIRST LEVEL



GROUND LEVEL



UPPER GARDEN LEVEL

*APARTMENT B4 IS AS ABOVE BUT HANDED

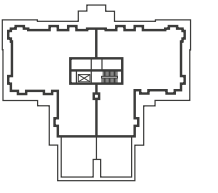
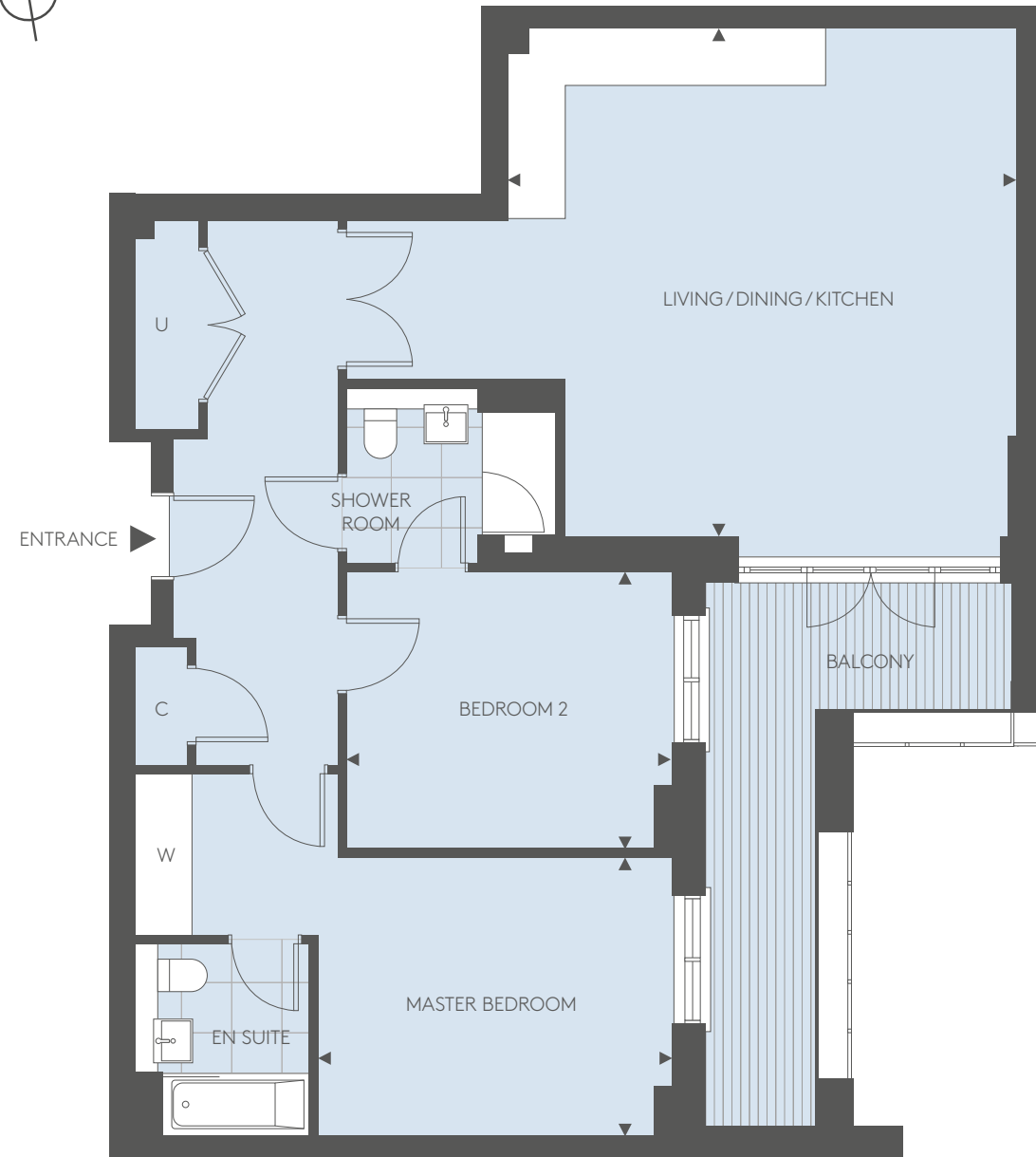
DIMENSIONS	78.6 SQ M	846 SQ FT	LOCATION
LIVING / DINING / KITCHEN	5.11M X 5.60M	16' 9" X 18' 4"	
MASTER BEDROOM	2.85M X 3.19M	9' 4" X 10' 5"	
BEDROOM 2	2.75M X 3.84M	9' 0" X 12' 7"	

◄► - Measurement Points C - Cupboard U - Utility W - Wardrobe

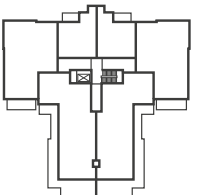
Floorplans shown for The Mansions are for approximate measurements only. Exact layouts and sizes may vary. All measurements may vary within a tolerance of 5%. The dimensions are not intended to be used for carpet sizes, appliance sizes or items of furniture. Floorplans are sized to fit each page and are not to scale.

APARTMENTS B7, B10*, B15 & B18*

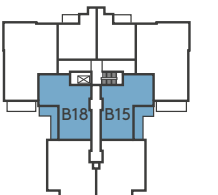
TWO BEDROOM APARTMENT



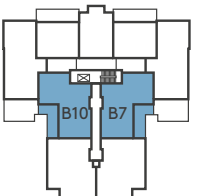
THIRD LEVEL



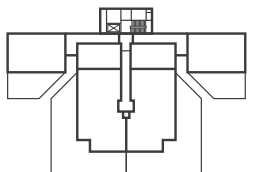
SECOND LEVEL



FIRST LEVEL



GROUND LEVEL



UPPER GARDEN LEVEL

*APARTMENTS B10 & B18 ARE AS ABOVE BUT HANDED

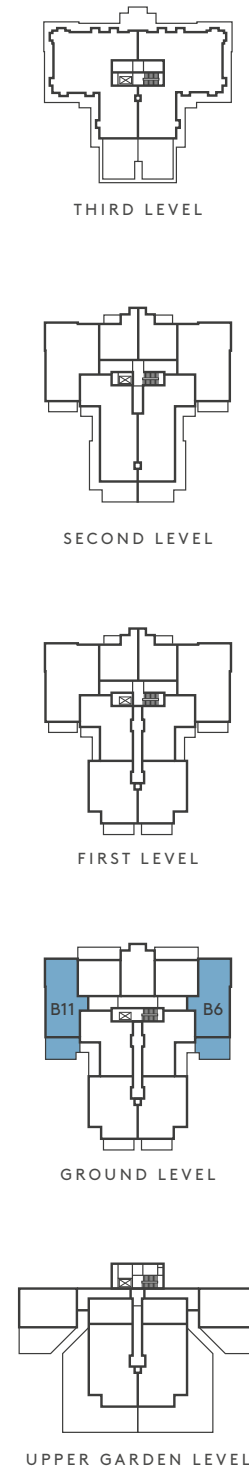
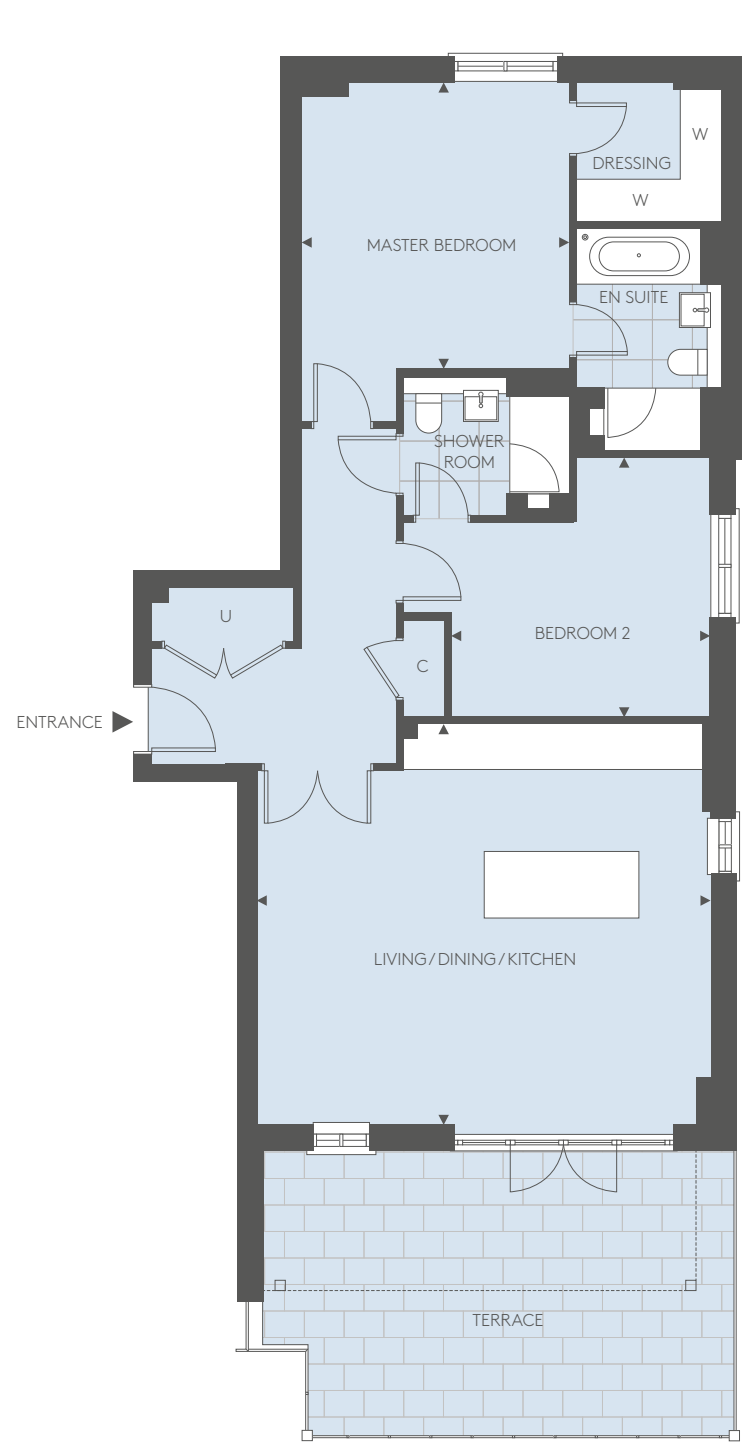
DIMENSIONS	91.3 SQ M	982 SQ FT	LOCATION
LIVING / DINING / KITCHEN	5.81M X 5.81M	19' 1" X 19' 1"	
MASTER BEDROOM	4.06M X 3.22M	13' 4" X 10' 7"	
BEDROOM 2	3.17M X 3.73M	10' 5" X 12' 3"	

◄► - Measurement Points C - Cupboard U - Utility W - Wardrobe

Floorplans shown for The Mansions are for approximate measurements only. Exact layouts and sizes may vary. All measurements may vary within a tolerance of 5%. The dimensions are not intended to be used for carpet sizes, appliance sizes or items of furniture. Floorplans are sized to fit each page and are not to scale.

APARTMENTS B6 & B11*

TWO BEDROOM APARTMENT



*APARTMENT B11 IS AS ABOVE BUT HANDED

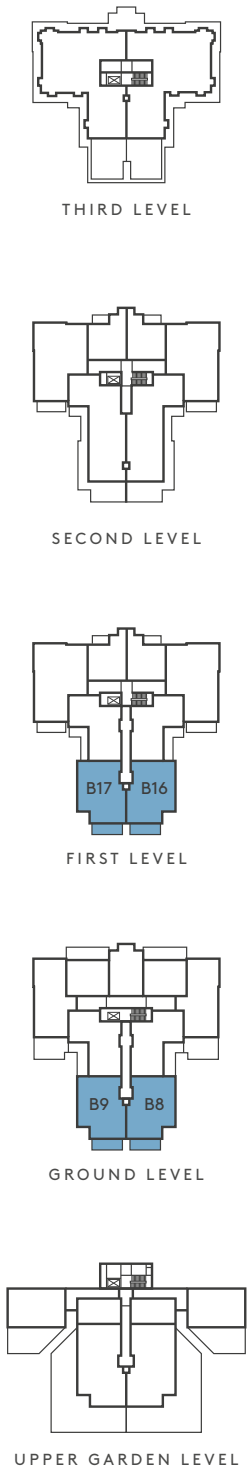
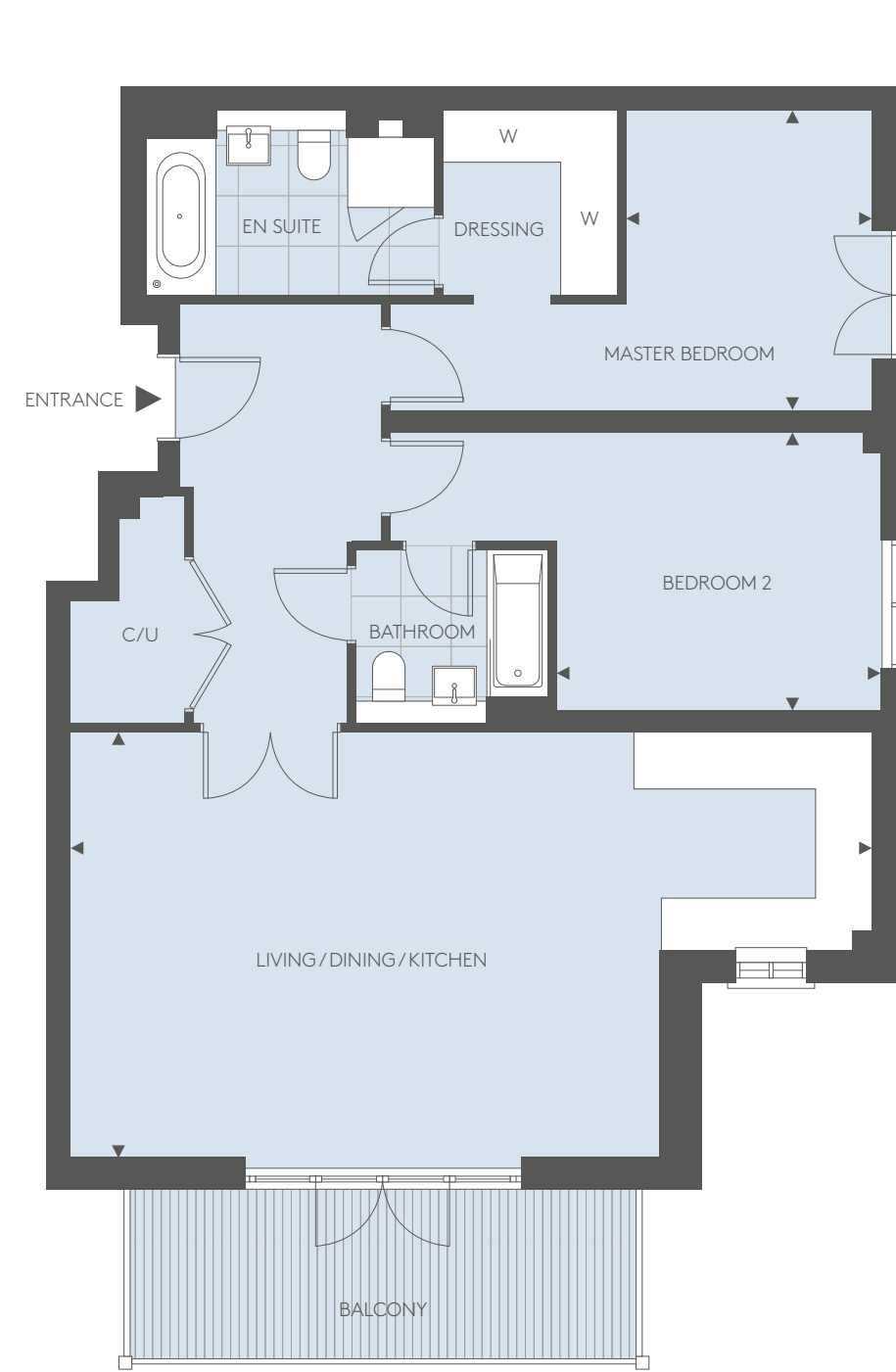
DIMENSIONS	98.2 SQ M	1,057 SQ FT	LOCATION
LIVING / DINING / KITCHEN	6.53M X 5.78M	21' 5" X 19' 0"	
MASTER BEDROOM	3.87M X 4.13M	12' 8" X 13' 7"	
BEDROOM 2	3.74M X 3.74M	12' 3" X 12' 5"	

◄► - Measurement Points C - Cupboard U - Utility W - Wardrobe

Floorplans shown for The Mansions are for approximate measurements only. Exact layouts and sizes may vary. All measurements may vary within a tolerance of 5%. The dimensions are not intended to be used for carpet sizes, appliance sizes or items of furniture. Floorplans are sized to fit each page and are not to scale.

APARTMENTS B8, B9*, B16 & B17*

TWO BEDROOM APARTMENT



*APARTMENTS B9 & B17 ARE AS ABOVE BUT HANDED

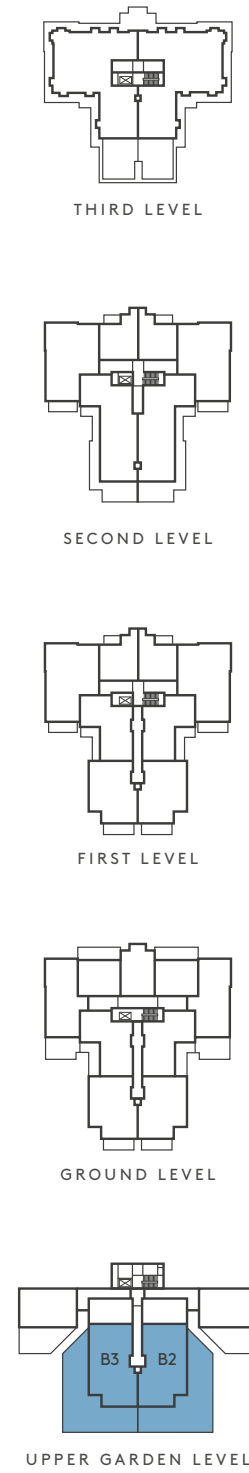
DIMENSIONS	100.1 SQ M	1,078 SQ FT	LOCATION
LIVING / DINING / KITCHEN	9.18M X 4.87M	30' 1" X 16' 0"	
MASTER BEDROOM	2.82M X 3.43M	9' 3" X 11' 3"	
BEDROOM 2	3.71M X 3.18M	12' 2" X 10' 5"	

◄► - Measurement Points C - Cupboard U - Utility W - Wardrobe

Floorplans shown for The Mansions are for approximate measurements only. Exact layouts and sizes may vary. All measurements may vary within a tolerance of 5%. The dimensions are not intended to be used for carpet sizes, appliance sizes or items of furniture. Floorplans are sized to fit each page and are not to scale.

APARTMENTS B2 & B3*

THREE BEDROOM APARTMENT



*APARTMENT B3 IS AS ABOVE BUT HANDED

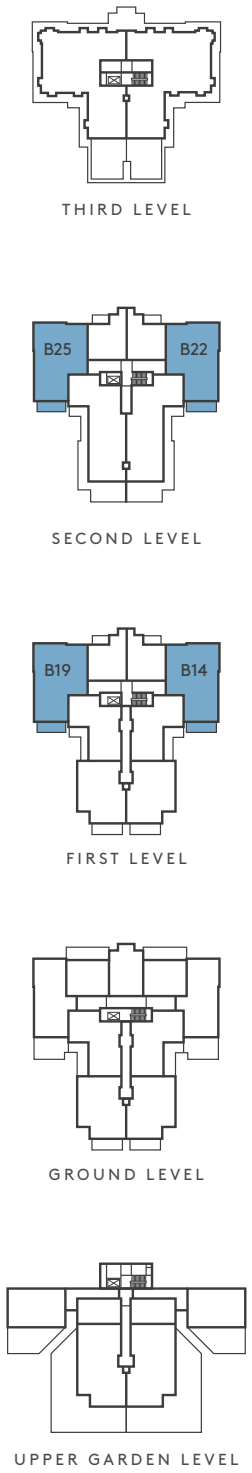
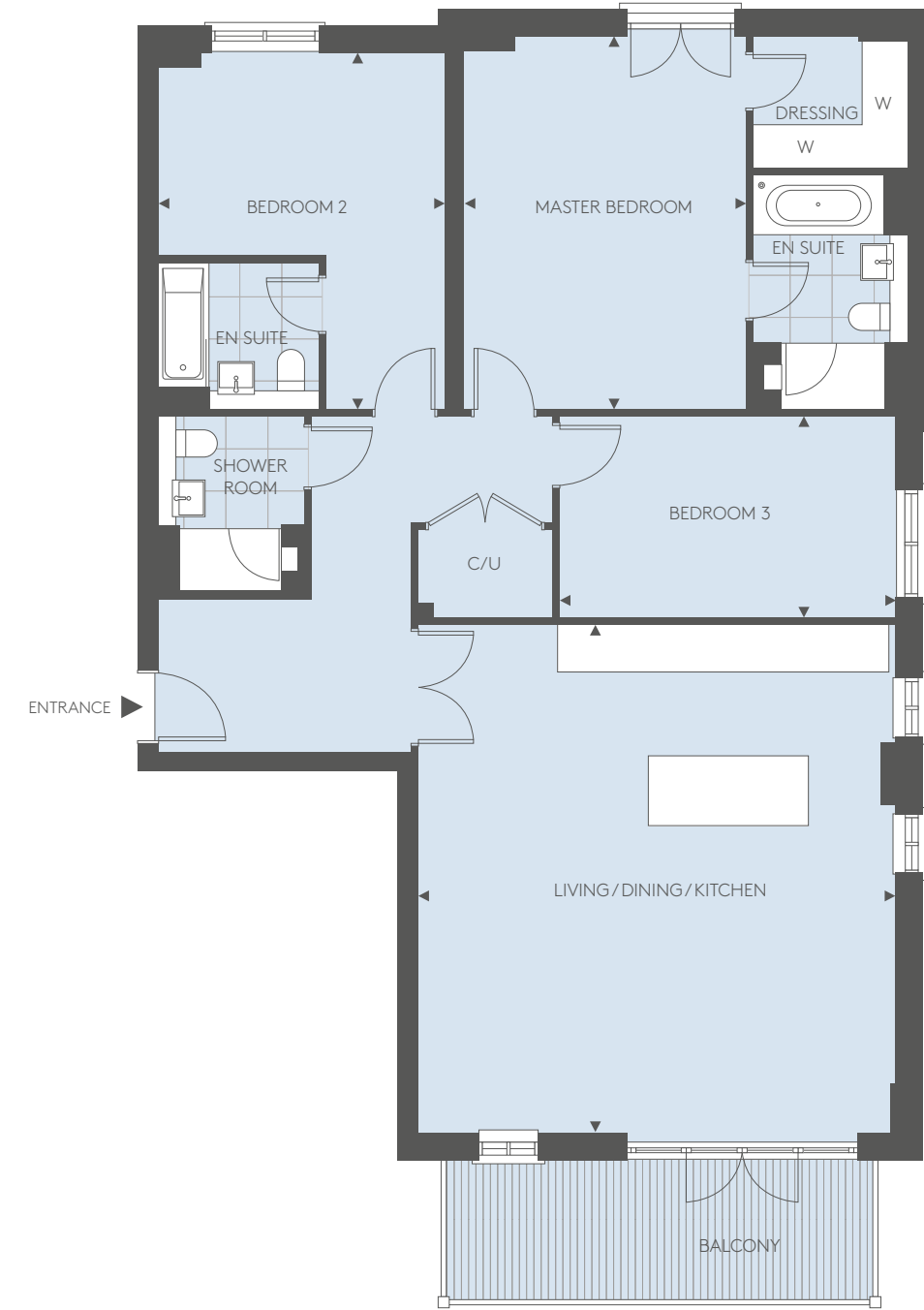
DIMENSIONS	131.1 SQ M	1,412 SQ FT	LOCATION
LIVING / DINING / KITCHEN	9.18M X 5.46M	30' 1" X 17' 11"	
MASTER BEDROOM	4.35M X 3.36M	14' 3" X 11' 0"	
BEDROOM 2	3.95M X 3.25M	12' 11" X 10' 8"	
BEDROOM 3	3.75M X 3.27M	12' 4" X 10' 9"	

◄► - Measurement Points C - Cupboard U - Utility W - Wardrobe

Floorplans shown for The Mansions are for approximate measurements only. Exact layouts and sizes may vary. All measurements may vary within a tolerance of 5%. The dimensions are not intended to be used for carpet sizes, appliance sizes or items of furniture. Floorplans are sized to fit each page and are not to scale.

APARTMENTS B14, B19*, B22 & B25*

THREE BEDROOM APARTMENT



*APARTMENTS B19 & B25 ARE AS ABOVE BUT HANDED

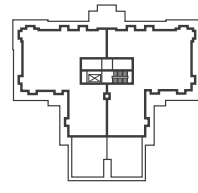
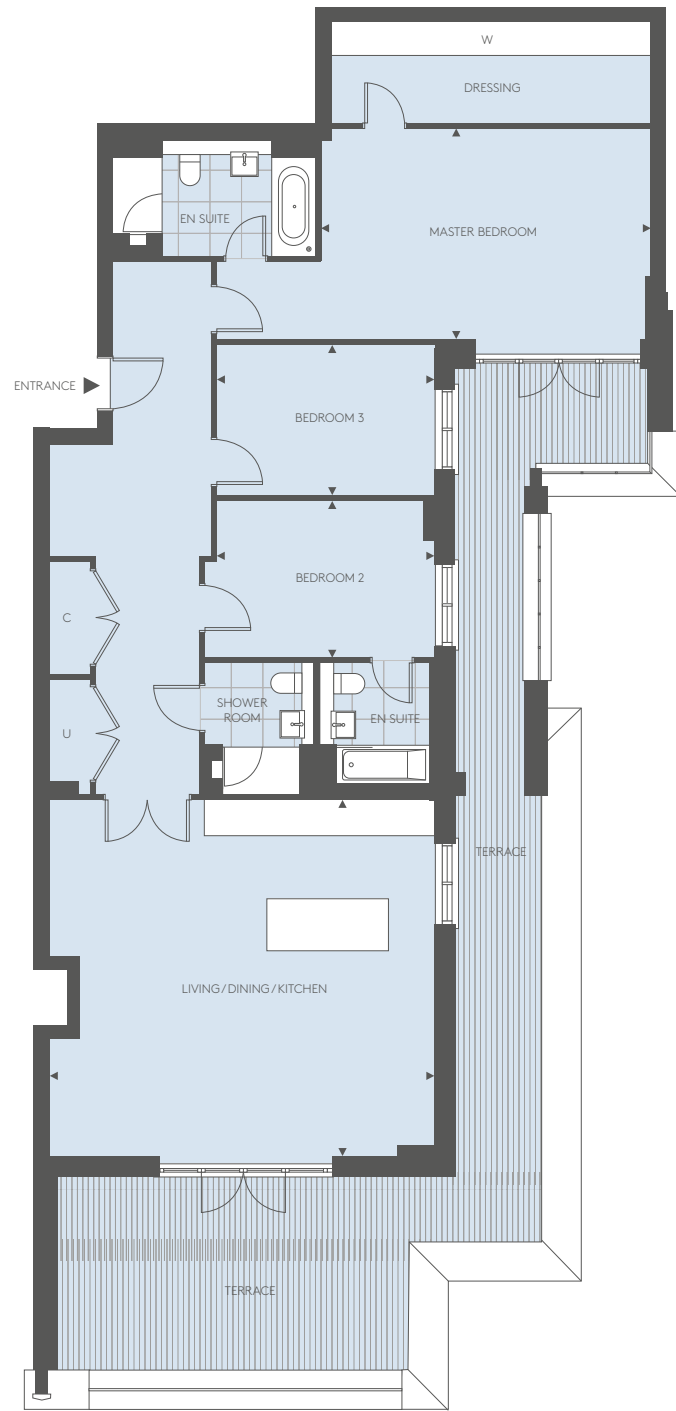
DIMENSIONS	133.2 SQ M	1,433 SQ FT	LOCATION
LIVING / DINING / KITCHEN	6.53M X 6.95M	21' 5" X 22' 10"	
MASTER BEDROOM	3.86M X 5.11M	12' 8" X 16' 9"	
BEDROOM 2	3.93M X 2.79M	12' 11" X 9' 2"	
BEDROOM 3	4.60M X 2.75M	15' 1" X 9' 0"	

◄► - Measurement Points C - Cupboard U - Utility W - Wardrobe

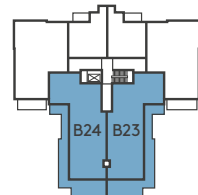
Floorplans shown for The Mansions are for approximate measurements only. Exact layouts and sizes may vary. All measurements may vary within a tolerance of 5%. The dimensions are not intended to be used for carpet sizes, appliance sizes or items of furniture. Floorplans are sized to fit each page and are not to scale.

APARTMENTS B23 & B24*

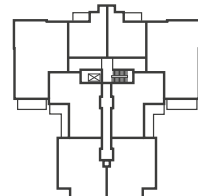
THREE BEDROOM APARTMENT



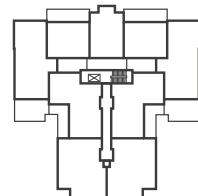
THIRD LEVEL



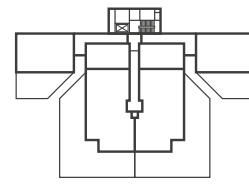
SECOND LEVEL



FIRST LEVEL



GROUND LEVEL



UPPER GARDEN LEVEL

*APARTMENT B24 IS AS ABOVE BUT HANDED

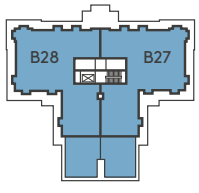
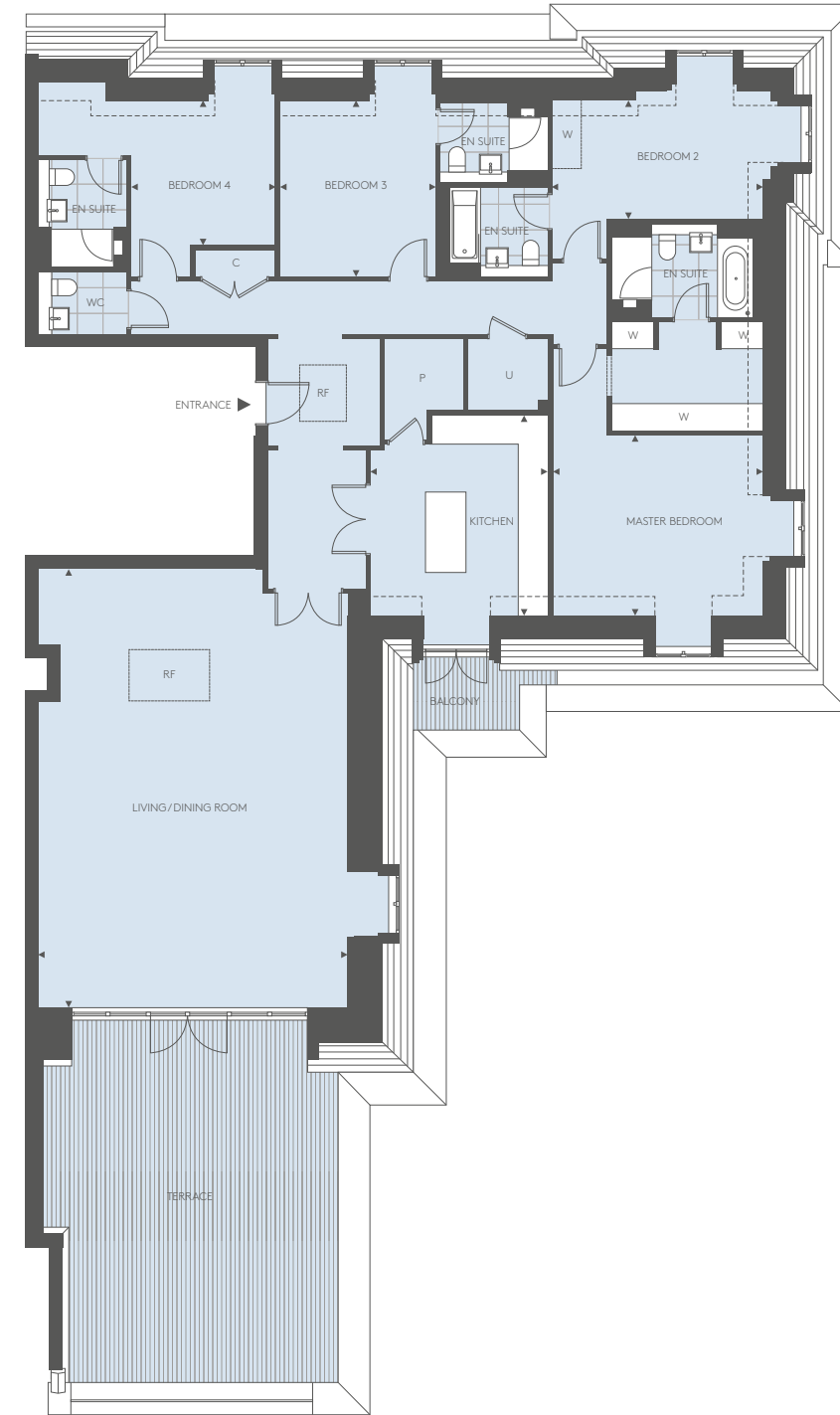
DIMENSIONS	150.7 SQ M	1,622 SQ FT	LOCATION
LIVING / DINING / KITCHEN	7.03M X 6.50M	23' 1" X 21' 4"	
MASTER BEDROOM	6.01M X 3.85M	19' 9" X 12' 8"	
BEDROOM 2	3.97M X 2.86M	13' 0" X 9' 4"	
BEDROOM 3	3.97M X 2.75M	13' 0" X 9' 0"	

◀▶ – Measurement Points C – Cupboard U – Utility W – Wardrobe

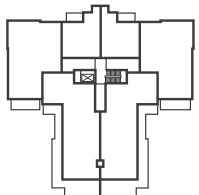
Floorplans shown for The Mansions are for approximate measurements only. Exact layouts and sizes may vary. All measurements may vary within a tolerance of 5%. The dimensions are not intended to be used for carpet sizes, appliance sizes or items of furniture. Floorplans are sized to fit each page and are not to scale.

PENTHOUSES B27 & B28*

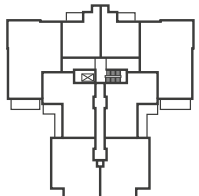
FOUR BEDROOM PENTHOUSE



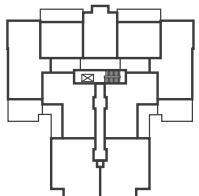
THIRD LEVEL



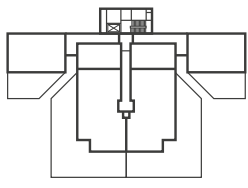
SECOND LEVEL



FIRST LEVEL



GROUND LEVEL



UPPER GARDEN LEVEL

*APARTMENT B28 IS AS ABOVE BUT HANDED

DIMENSIONS	231.3 SQ M	2,490 SQ FT	LOCATION
LIVING / DINING ROOM	6.94M X 9.83M	22' 9" X 32' 3"	
KITCHEN	3.99M X 4.50M	13' 1" X 14' 9"	
MASTER BEDROOM	4.73M X 4.06M	15' 6" X 13' 4"	
BEDROOM 2	4.74M X 2.66M	15' 6" X 8' 9"	
BEDROOM 3	3.50M X 3.94M	11' 6" X 12' 11"	
BEDROOM 4	3.23M X 3.25M	10' 7" X 10' 8"	

◀▶ – Measurement Points C – Cupboard U – Utility W – Wardrobe P – Pantry RF – Roof Light

Floorplans shown for The Mansions are for approximate measurements only. Exact layouts and sizes may vary. All measurements may vary within a tolerance of 5%. The dimensions are not intended to be used for carpet sizes, appliance sizes or items of furniture. Floorplans are sized to fit each page and are not to scale.

PAKENHAM HOUSE

APARTMENT FINDER



Computer Generated Image of The Mansions is indicative only

APARTMENT NO.	BEDROOMS	LEVEL	PAGE NO.
A1	3	Garden Level	67
A2	2	Garden Level	65
A3	1	Upper Garden Level	62
A4	3	Upper Garden Level	68
A5	2	Upper Garden Level	64
A6	2	Ground Level	63
A7	3	Ground Level	68
A8	2	Ground Level	64
A9 Penthouse	2	First Level	66
A10 Penthouse	3	First Level	69

SITE PLAN



PAKENHAM HOUSE

PAKENHAM HOUSE

SOUTH ELEVATION

The sitemap is indicative only and not to scale.

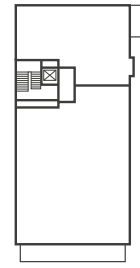
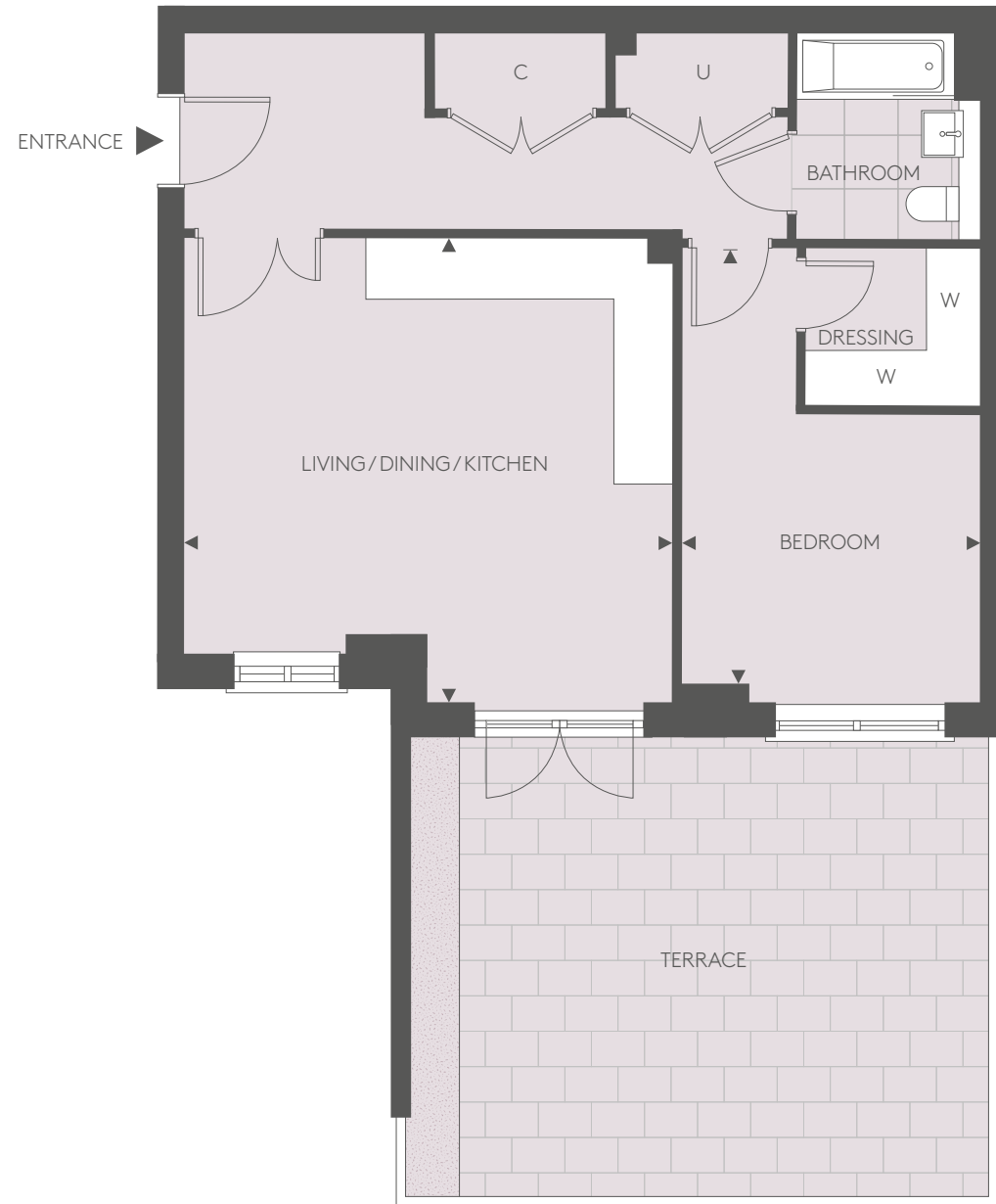
SOUTH ELEVATION



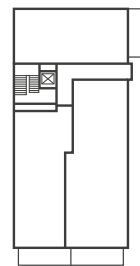
THIRD LEVEL
 SECOND LEVEL
 FIRST LEVEL
 GROUND LEVEL
 UPPER GARDEN LEVEL
 GARDEN LEVEL

APARTMENT A3

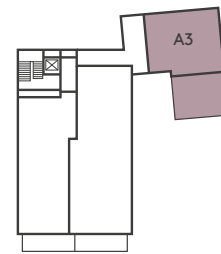
ONE BEDROOM APARTMENT



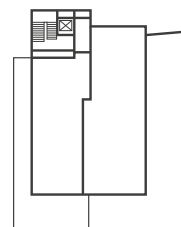
FIRST LEVEL



GROUND LEVEL



UPPER GARDEN LEVEL



GARDEN LEVEL

DIMENSIONS	59.9 SQ M	645 SQ FT
LIVING/DINING/KITCHEN	5.25M X 4.99M	17' 3" X 16' 4"
BEDROOM	3.20M X 4.68M	10' 6" X 15' 4"

LOCATION

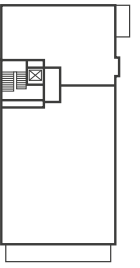
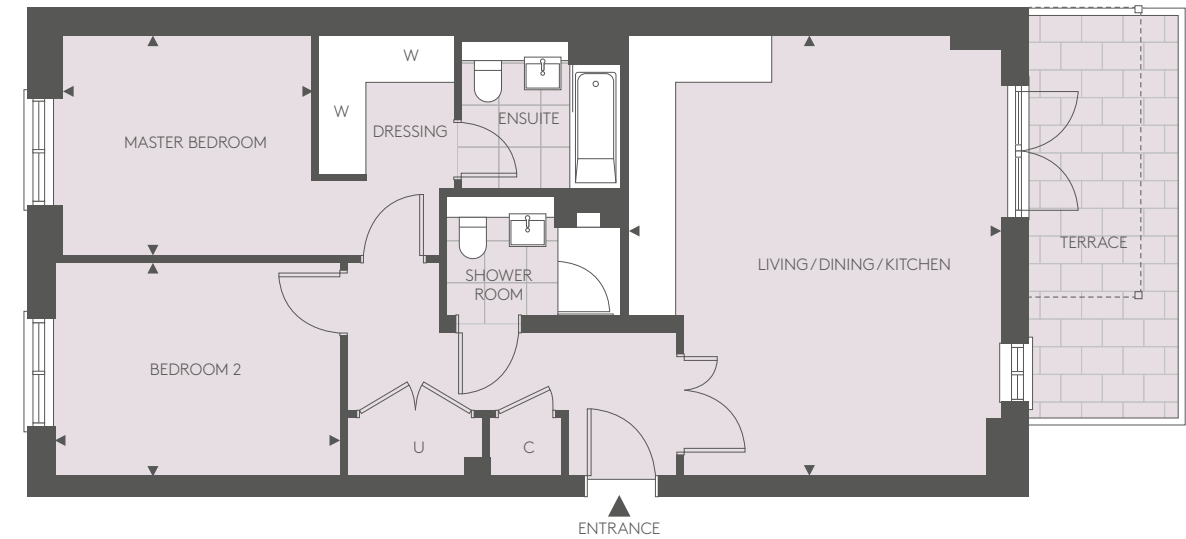


◀▶ – Measurement Points C – Cupboard U – Utility W – Wardrobe

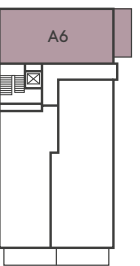
Floorplans shown for The Mansions are for approximate measurements only. Exact layouts and sizes may vary. All measurements may vary within a tolerance of 5%. The dimensions are not intended to be used for carpet sizes, appliance sizes or items of furniture. Floorplans are sized to fit each page and are not to scale.

APARTMENT A6

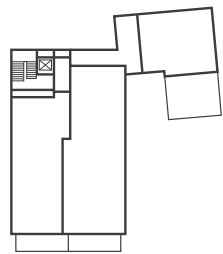
TWO BEDROOM APARTMENT



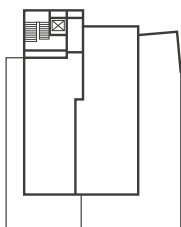
FIRST LEVEL



GROUND LEVEL



UPPER GARDEN LEVEL



GARDEN LEVEL

DIMENSIONS	78.4 SQ M	844 SQ FT
LIVING/DINING/KITCHEN	5.12M X 6.05M	16' 10" X 19' 10"
MASTER BEDROOM	5.17M X 3.03M	17' 0" X 9' 11"
BEDROOM 2	3.91M X 2.93M	12' 10" X 9' 7"

LOCATION

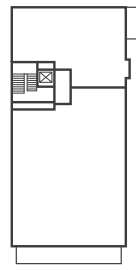
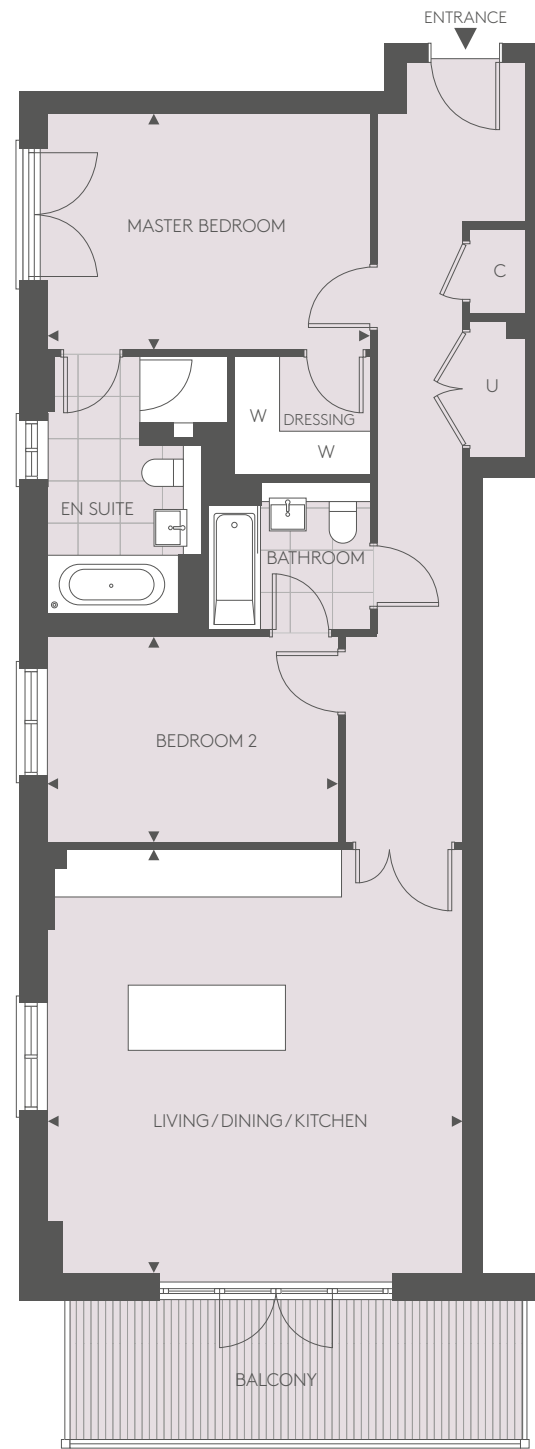


◀▶ – Measurement Points C – Cupboard U – Utility W – Wardrobe

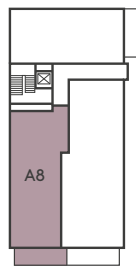
Floorplans shown for The Mansions are for approximate measurements only. Exact layouts and sizes may vary. All measurements may vary within a tolerance of 5%. The dimensions are not intended to be used for carpet sizes, appliance sizes or items of furniture. Floorplans are sized to fit each page and are not to scale.

APARTMENTS A5 & A8

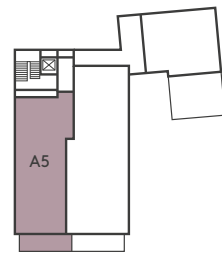
TWO BEDROOM APARTMENT



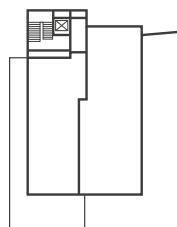
FIRST LEVEL



GROUND LEVEL



UPPER GARDEN LEVEL



GARDEN LEVEL

DIMENSIONS	94.6 SQ M	1,018 SQ FT
LIVING/DINING/KITCHEN	5.65M X 5.78M	18' 6" X 18' 11"
MASTER BEDROOM	4.40M X 3.22M	14' 5" X 10' 7"
BEDROOM 2	3.96M X 2.80M	13' 0" X 9' 2"

LOCATION

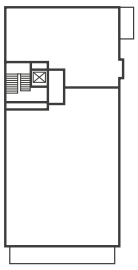
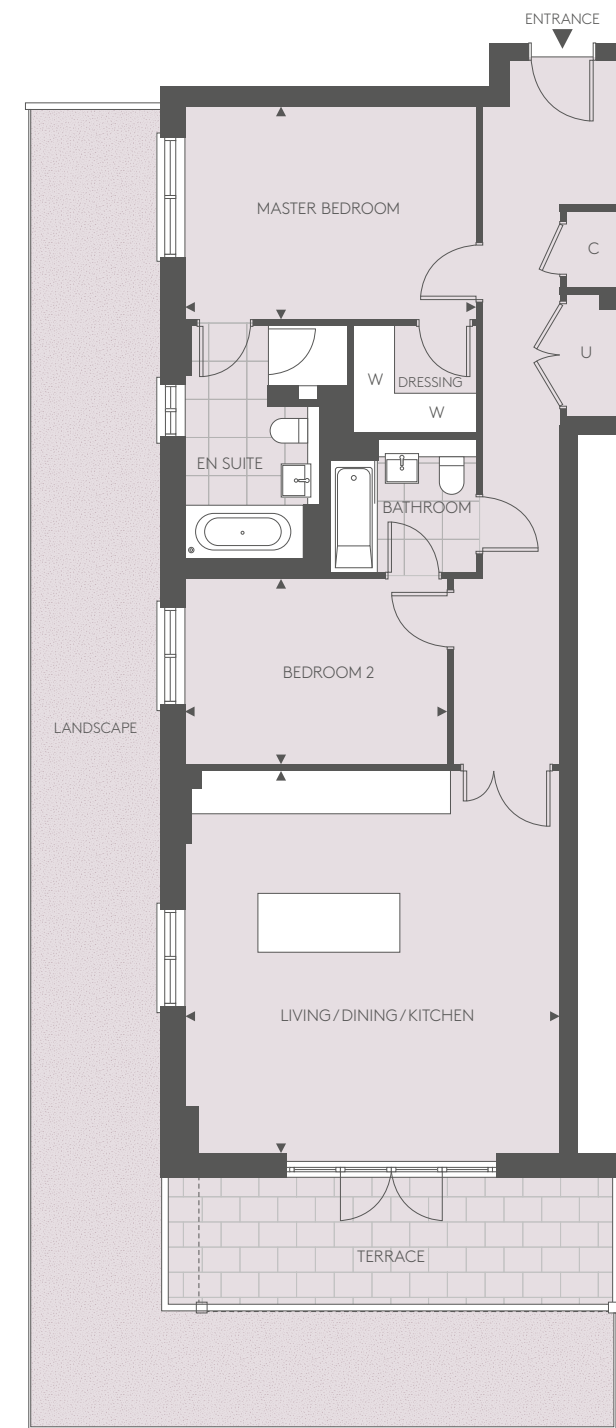


◀▶ - Measurement Points C - Cupboard U - Utility W - Wardrobe

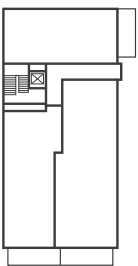
Floorplans shown for The Mansions are for approximate measurements only. Exact layouts and sizes may vary. All measurements may vary within a tolerance of 5%. The dimensions are not intended to be used for carpet sizes, appliance sizes or items of furniture. Floorplans are sized to fit each page and are not to scale.

APARTMENT A2

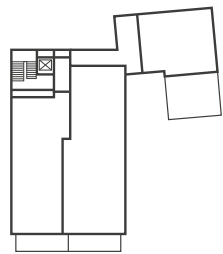
TWO BEDROOM APARTMENT



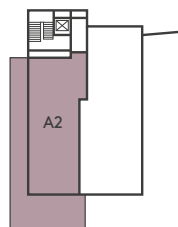
FIRST LEVEL



GROUND LEVEL



UPPER GARDEN LEVEL



GARDEN LEVEL

DIMENSIONS	94.6 SQ M	1,018 SQ FT
LIVING/DINING/KITCHEN	5.65M X 5.78M	18' 6" X 18' 11"
MASTER BEDROOM	4.40M X 3.22M	14' 5" X 10' 7"
BEDROOM 2	3.96M X 2.80M	13' 0" X 9' 2"

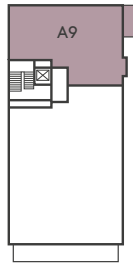
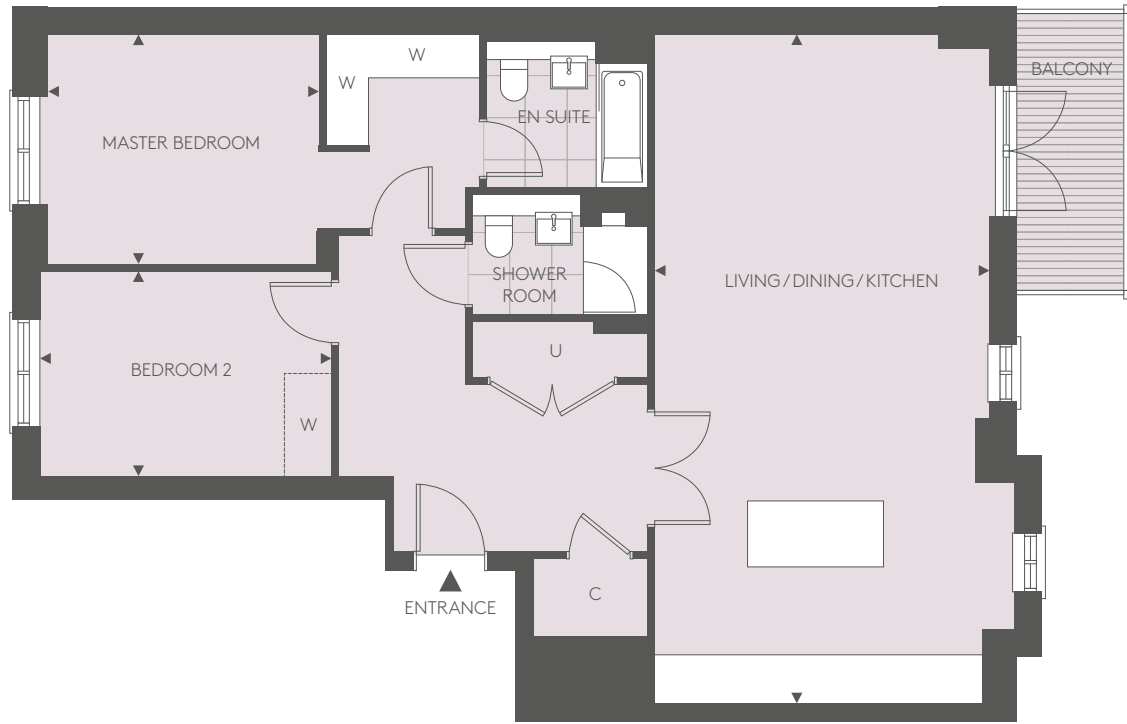
LOCATION



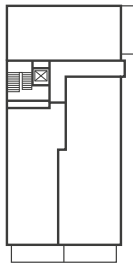
◀▶ - Measurement Points C - Cupboard U - Utility W - Wardrobe

Floorplans shown for The Mansions are for approximate measurements only. Exact layouts and sizes may vary. All measurements may vary within a tolerance of 5%. The dimensions are not intended to be used for carpet sizes, appliance sizes or items of furniture. Floorplans are sized to fit each page and are not to scale.

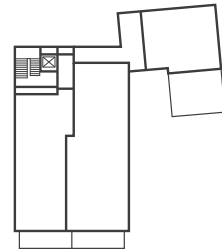
PENTHOUSE A9
TWO BEDROOM PENTHOUSE



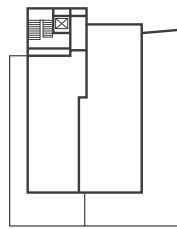
FIRST LEVEL



GROUND LEVEL



UPPER GARDEN LEVEL



GARDEN LEVEL

DIMENSIONS	98.3 SQ M	1,058 SQ FT
LIVING/DINING/KITCHEN	4.58M X 9.15M	15' 0" X 30' 0"
MASTER BEDROOM	3.69M X 3.15M	12' 1" X 10' 4"
BEDROOM 2	3.99M X 2.80M	13' 1" X 9' 2"

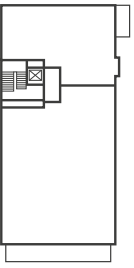
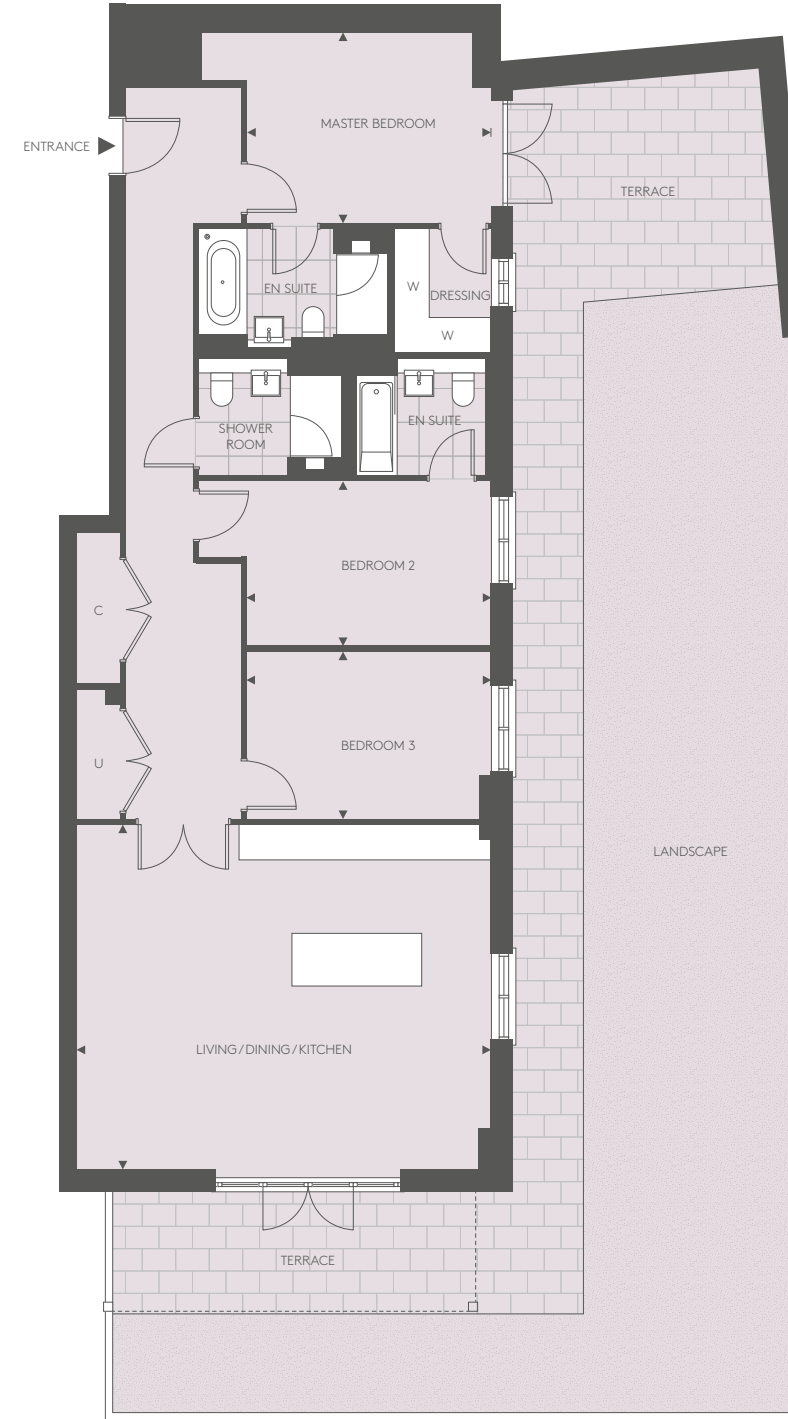
LOCATION



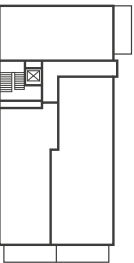
◄► - Measurement Points C - Cupboard U - Utility W - Wardrobe

Floorplans shown for The Mansions are for approximate measurements only. Exact layouts and sizes may vary. All measurements may vary within a tolerance of 5%. The dimensions are not intended to be used for carpet sizes, appliance sizes or items of furniture. Floorplans are sized to fit each page and are not to scale.

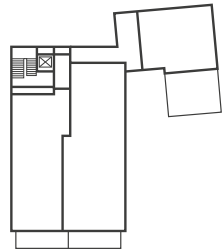
APARTMENT A1
THREE BEDROOM APARTMENT



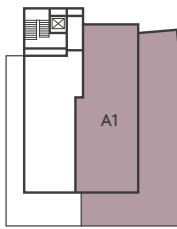
FIRST LEVEL



GROUND LEVEL



UPPER GARDEN LEVEL



GARDEN LEVEL

DIMENSIONS	128.1 SQ M	1,379 SQ FT
LIVING/DINING/KITCHEN	7.05M X 5.87M	23' 2" X 19' 3"
MASTER BEDROOM	4.15M X 3.24M	13' 8" X 10' 8"
BEDROOM 2	4.15M X 2.80M	13' 8" X 9' 2"
BEDROOM 3	4.15M X 2.85M	13' 8" X 9' 4"

LOCATION

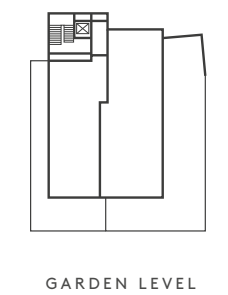
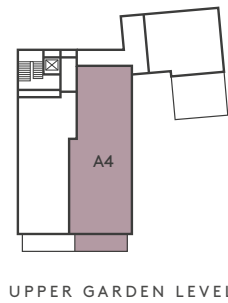
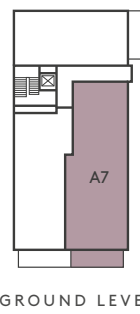
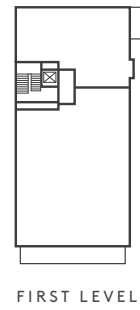
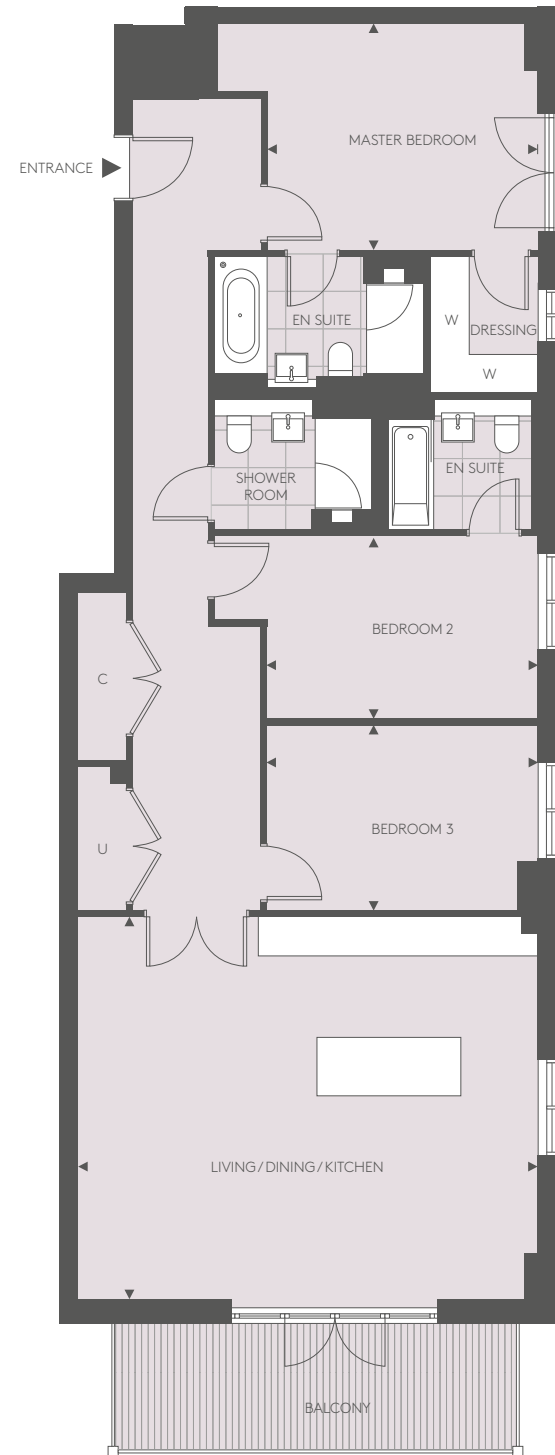


◄► - Measurement Points C - Cupboard U - Utility W - Wardrobe

Floorplans shown for The Mansions are for approximate measurements only. Exact layouts and sizes may vary. All measurements may vary within a tolerance of 5%. The dimensions are not intended to be used for carpet sizes, appliance sizes or items of furniture. Floorplans are sized to fit each page and are not to scale.

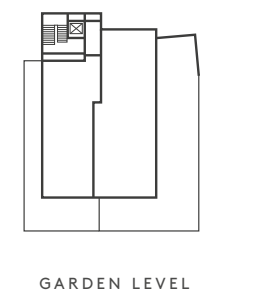
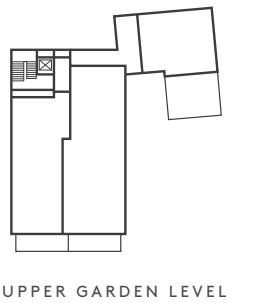
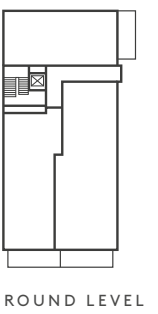
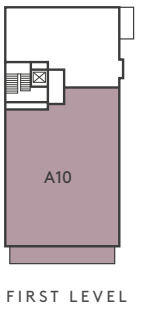
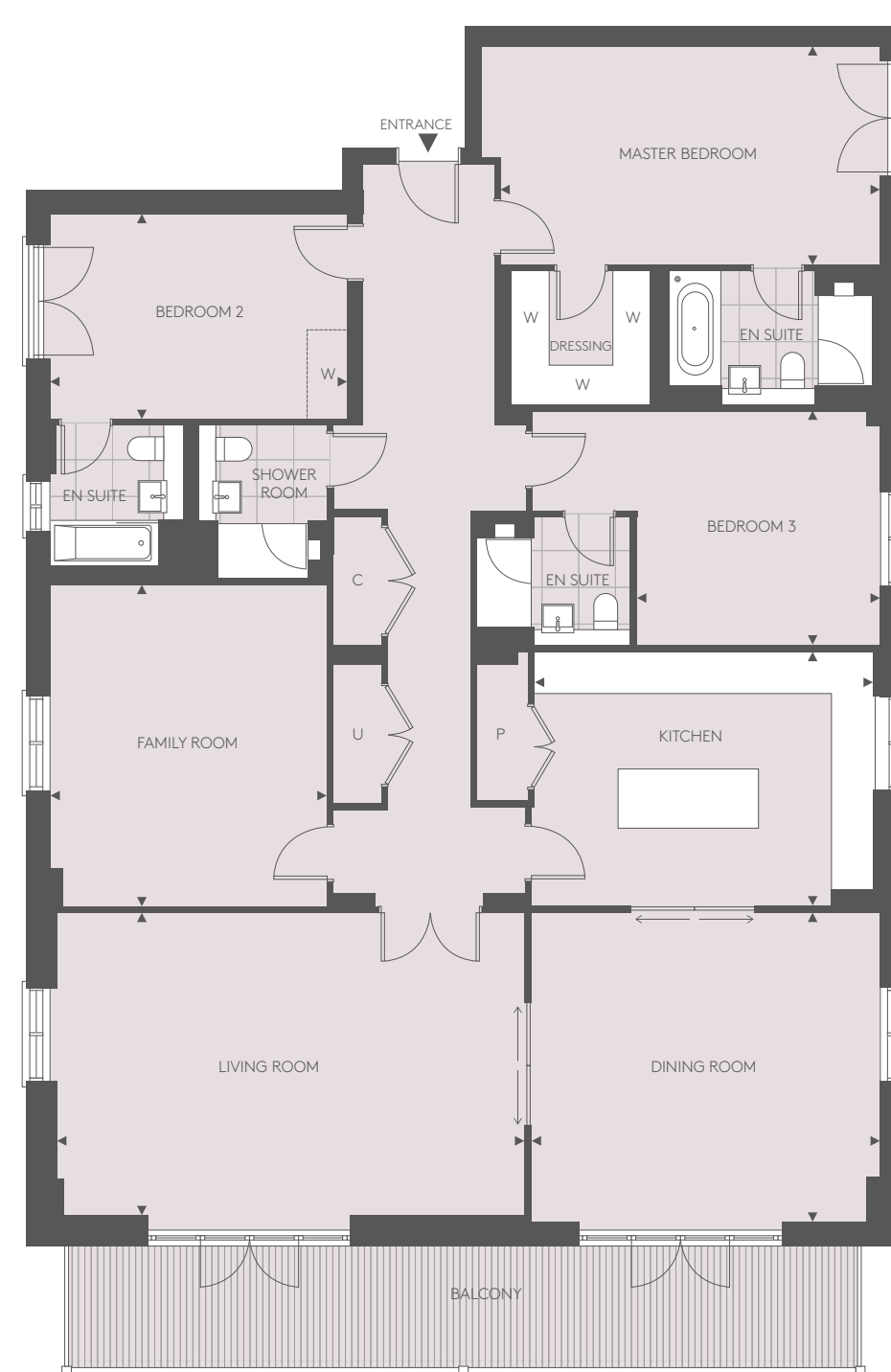
APARTMENTS A4 & A7

THREE BEDROOM APARTMENT



PENTHOUSE A10

THREE BEDROOM PENTHOUSE



PAKENHAM HOUSE

DIMENSIONS	129.4 SQ M	1,393 SQ FT
LIVING/DINING/KITCHEN	7.05M X 5.87M	23' 2" X 19' 3"
MASTER BEDROOM	4.15M X 3.48M	13' 8" X 11' 5"
BEDROOM 2	4.15M X 2.80M	13' 8" X 9' 2"
BEDROOM 3	4.15M X 2.85M	13' 8" X 9' 4"

LOCATION



◄► - Measurement Points C - Cupboard U - Utility W - Wardrobe

Floorplans shown for The Mansions are for approximate measurements only. Exact layouts and sizes may vary. All measurements may vary within a tolerance of 5%. The dimensions are not intended to be used for carpet sizes, appliance sizes or items of furniture. Floorplans are sized to fit each page and are not to scale.

DIMENSIONS	222.8 SQ M	2,399 SQ FT
FAMILY ROOM	4.34M X 5.03M	14' 3" X 16' 6"
LIVING ROOM	7.33M X 4.76M	24' 0" X 15' 8"
DINING ROOM	5.46M X 4.86M	17' 11" X 15' 11"
KITCHEN	5.32M X 3.97M	17' 5" X 13' 0"
MASTER BEDROOM	5.94M X 3.43M	19' 6" X 11' 3"
BEDROOM 2	4.65M X 3.22M	15' 3" X 10' 7"
BEDROOM 3	3.72M X 3.67M	12' 3" X 12' 1"

LOCATION



◄► - Measurement Points C - Cupboard U - Utility W - Wardrobe P - Pantry

Floorplans shown for The Mansions are for approximate measurements only. Exact layouts and sizes may vary. All measurements may vary within a tolerance of 5%. The dimensions are not intended to be used for carpet sizes, appliance sizes or items of furniture. Floorplans are sized to fit each page and are not to scale.

PAXTON HOUSE



APARTMENT FINDER



APARTMENT NO.	BEDROOMS	LEVEL	PAGE NO.
C1	3	Upper Garden Level	77
C2	1	Ground Level	74
C3	3	Ground Level	76
C4	2	First Level	75
C5	3	First Level	76
C6 Penthouse	3	Second Level	78

SITE PLAN

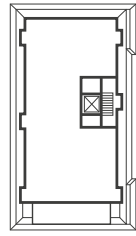


SOUTH ELEVATION

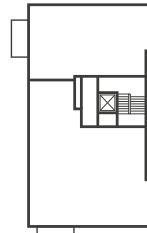


APARTMENT C2

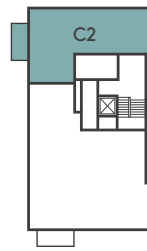
ONE BEDROOM APARTMENT



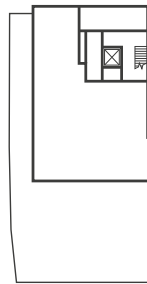
SECOND LEVEL



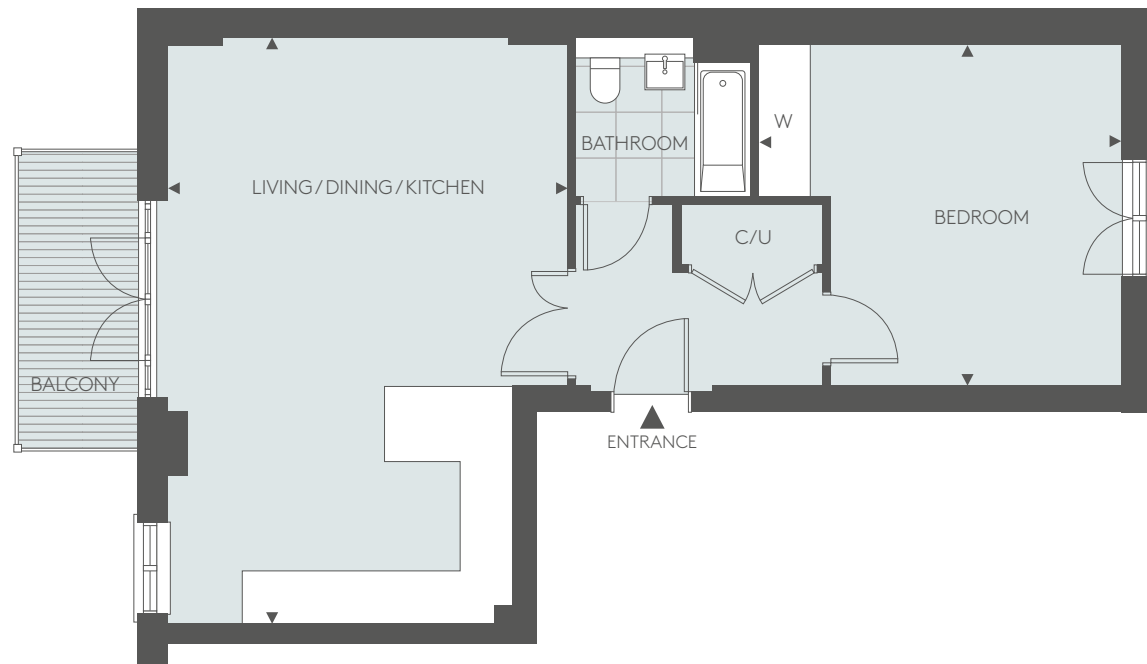
FIRST LEVEL



GROUND LEVEL

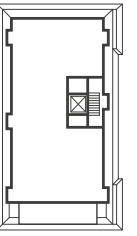


UPPER GARDEN LEVEL

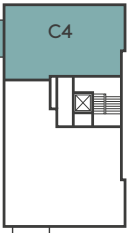


APARTMENT C4

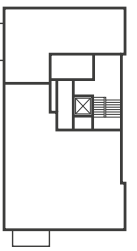
TWO BEDROOM APARTMENT



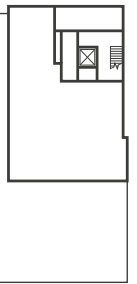
SECOND LEVEL



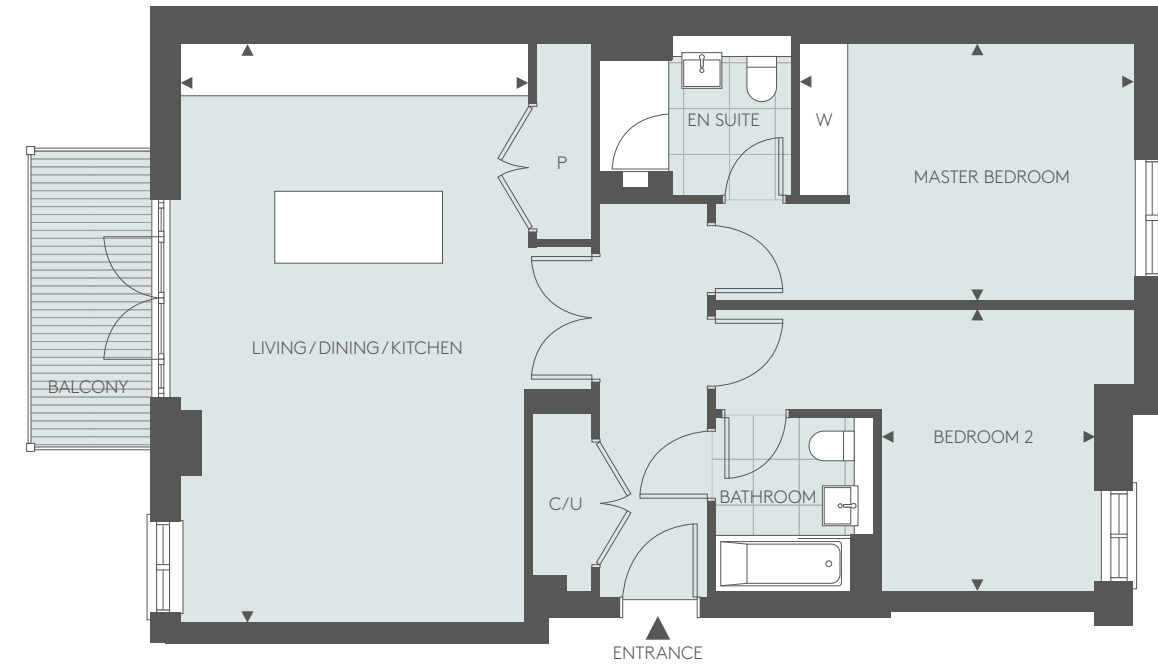
FIRST LEVEL



GROUND LEVEL



UPPER GARDEN LEVEL



PAXTON HOUSE

DIMENSIONS	65 SQ M	699 SQ FT
LIVING/DINING/KITCHEN	5.02M X 7.35M	16' 6" X 24' 2"
BEDROOM	4.56M X 4.28M	15' 0" X 14' 0"



◀▶ - Measurement Points C - Cupboard U - Utility W - Wardrobe

Floorplans shown for The Mansions are for approximate measurements only. Exact layouts and sizes may vary. All measurements may vary within a tolerance of 5%. The dimensions are not intended to be used for carpet sizes, appliance sizes or items of furniture. Floorplans are sized to fit each page and are not to scale.

DIMENSIONS	83.2 SQ M	895 SQ FT
LIVING/DINING/KITCHEN	4.37M X 7.28M	14' 4" X 23' 11"
MASTER BEDROOM	4.21M X 3.23M	13' 10" X 10' 7"
BEDROOM 2	2.68M X 3.54M	8' 9" X 11' 8"

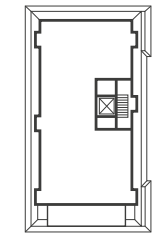


◀▶ - Measurement Points C - Cupboard U - Utility W - Wardrobe P - Pantry

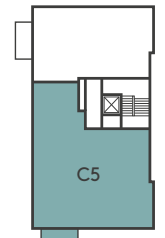
Floorplans shown for The Mansions are for approximate measurements only. Exact layouts and sizes may vary. All measurements may vary within a tolerance of 5%. The dimensions are not intended to be used for carpet sizes, appliance sizes or items of furniture. Floorplans are sized to fit each page and are not to scale.

APARTMENTS C3 & C5

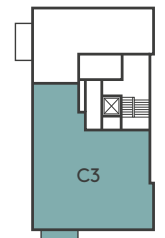
THREE BEDROOM APARTMENT



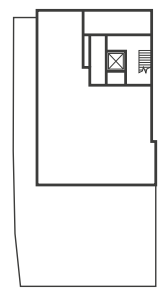
SECOND LEVEL



FIRST LEVEL



GROUND LEVEL



UPPER GARDEN LEVEL

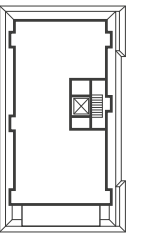
DIMENSIONS	137.5 SQ M	1,480 SQ FT	LOCATION
LIVING/DINING/KITCHEN	7.75M X 6.24M	25' 5" X 20' 6"	
MASTER BEDROOM	3.98M X 3.68M	13' 1" X 12' 1"	
BEDROOM 2	4.32M X 4.77M	14' 2" X 15' 8"	
BEDROOM 3	4.15M X 3.36M	13' 7" X 11' 0"	

◄► - Measurement Points C - Cupboard U - Utility W - Wardrobe

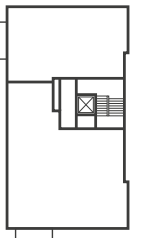
Floorplans shown for The Mansions are for approximate measurements only. Exact layouts and sizes may vary. All measurements may vary within a tolerance of 5%. The dimensions are not intended to be used for carpet sizes, appliance sizes or items of furniture. Floorplans are sized to fit each page and are not to scale.

APARTMENT C1

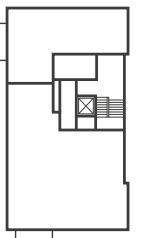
THREE BEDROOM APARTMENT



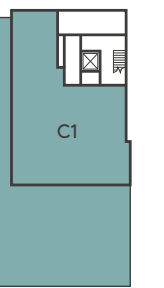
SECOND LEVEL



FIRST LEVEL



GROUND LEVEL



UPPER GARDEN LEVEL

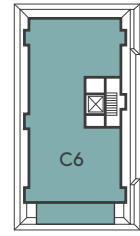
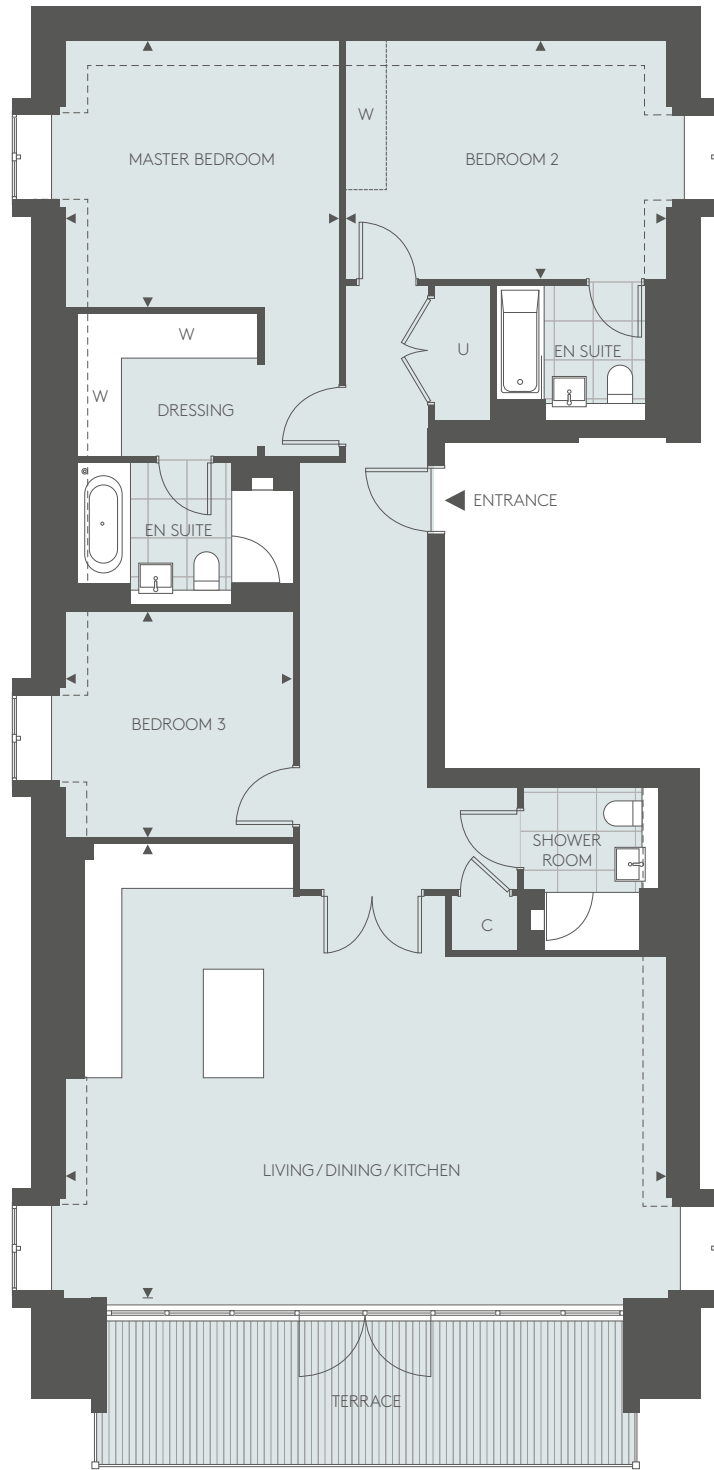
DIMENSIONS	145.1 SQ M	1,562 SQ FT	LOCATION
LIVING/DINING/KITCHEN	7.75M X 6.39M	25' 5" X 21' 0"	
MASTER BEDROOM	3.66M X 3.73M	12' 0" X 12' 3"	
BEDROOM 2	4.32M X 3.29M	14' 2" X 10' 10"	
BEDROOM 3	4.23M X 3.16M	13' 11" X 10' 4"	

◄► - Measurement Points C - Cupboard U - Utility W - Wardrobe

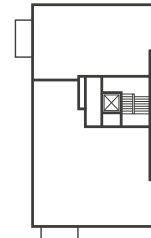
Floorplans shown for The Mansions are for approximate measurements only. Exact layouts and sizes may vary. All measurements may vary within a tolerance of 5%. The dimensions are not intended to be used for carpet sizes, appliance sizes or items of furniture. Floorplans are sized to fit each page and are not to scale.

PENTHOUSE C6

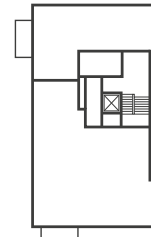
THREE BEDROOM PENTHOUSE



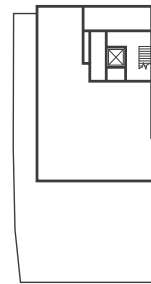
SECOND LEVEL



FIRST LEVEL



GROUND LEVEL



UPPER GARDEN LEVEL

DIMENSIONS	149.2 SQ M	1,606 SQ FT
LIVING/DINING/KITCHEN	8.88M X 6.71M	29' 1" X 22' 0"
MASTER BEDROOM	4.04M X 3.95M	13' 3" X 12' 11"
BEDROOM 2	4.74M X 3.52M	15' 7" X 11' 7"
BEDROOM 3	3.36M X 3.35M	11' 1" X 11' 0"

LOCATION



◄► - Measurement Points C - Cupboard U - Utility W - Wardrobe

Floorplans shown for The Mansions are for approximate measurements only. Exact layouts and sizes may vary. All measurements may vary within a tolerance of 5%. The dimensions are not intended to be used for carpet sizes, appliance sizes or items of furniture. Floorplans are sized to fit each page and are not to scale.



COWLEY HOUSE

APARTMENT FINDER



APARTMENT NO.	BEDROOMS	LEVEL	PAGE NO.
D1	2	Upper Garden Level	86
D2	3	Ground Level	87
D3	1	Ground Level	84
D4	3	First Level	87
D5	2	First Level	85
D6 Penthouse	3	Second Level	87
D7 Penthouse	2	Second Level	85

SITE PLAN



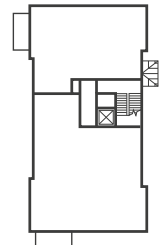
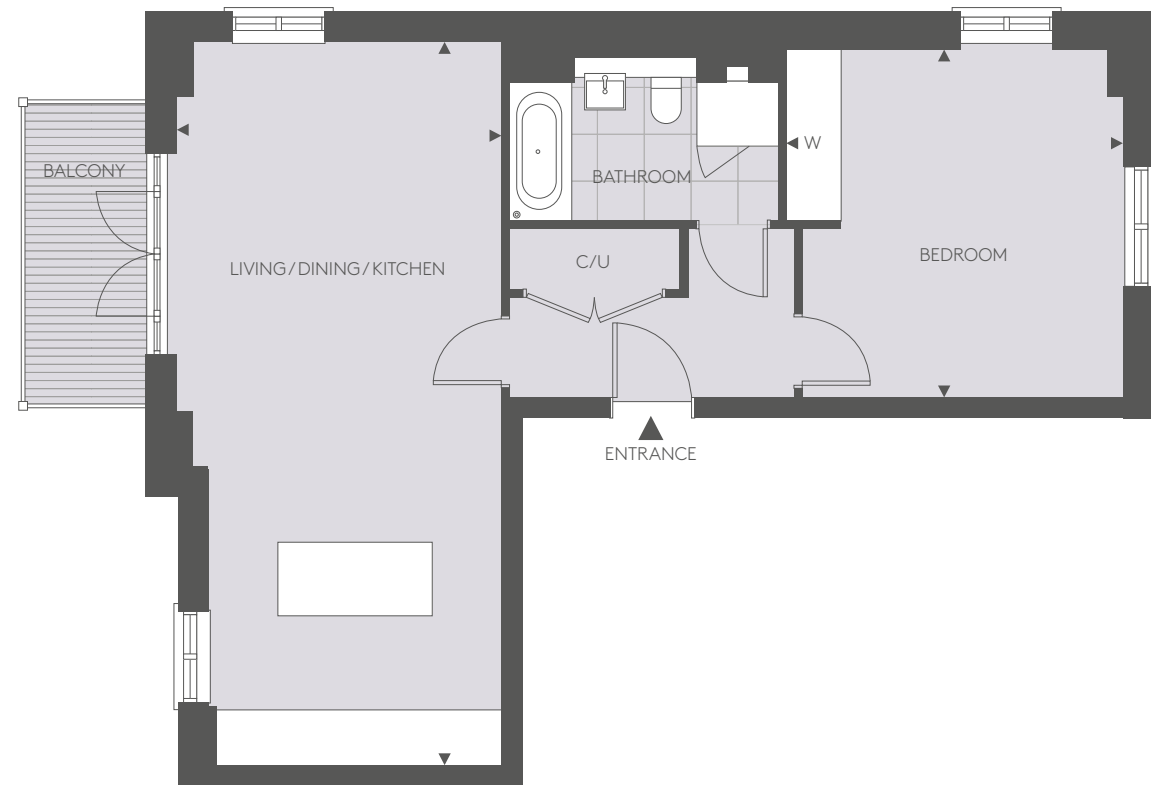
COWLEY HOUSE

SOUTH ELEVATION

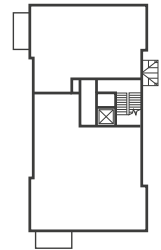


APARTMENT D3

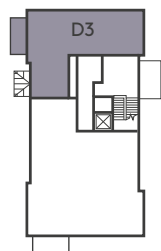
ONE BEDROOM APARTMENT



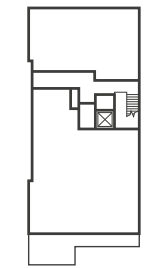
SECOND LEVEL



FIRST LEVEL



GROUND LEVEL



UPPER GARDEN LEVEL

DIMENSIONS	66.8 SQ M	719 SQ FT
LIVING/DINING/KITCHEN	4.00M X 8.89M	13' 1" X 29' 2"
BEDROOM	4.17M X 4.29M	13' 8" X 14' 1"

LOCATION

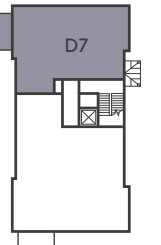
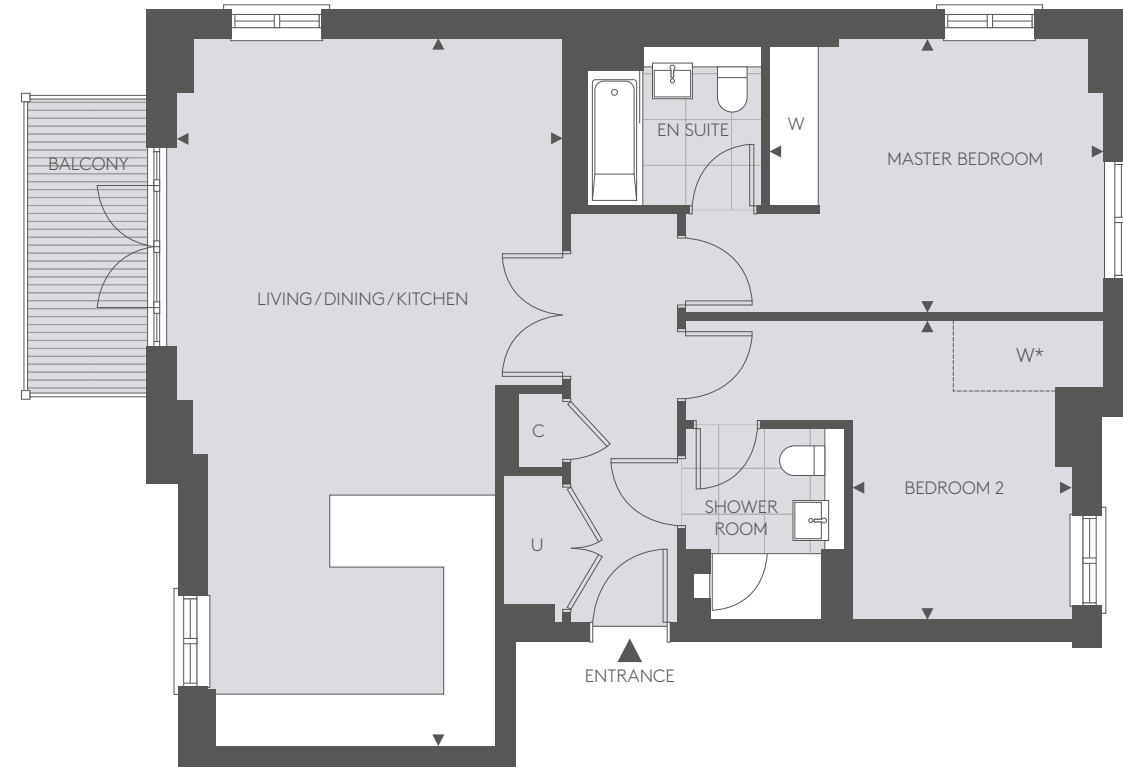


◀▶ - Measurement Points C - Cupboard U - Utility W - Wardrobe

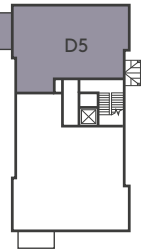
Floorplans shown for The Mansions are for approximate measurements only. Exact layouts and sizes may vary. All measurements may vary within a tolerance of 5%. The dimensions are not intended to be used for carpet sizes, appliance sizes or items of furniture. Floorplans are sized to fit each page and are not to scale.

APARTMENT D5 & PENTHOUSE D7

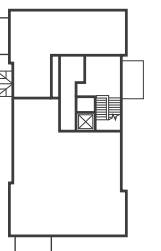
TWO BEDROOM APARTMENT & TWO BEDROOM PENTHOUSE



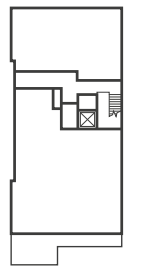
SECOND LEVEL



FIRST LEVEL



GROUND LEVEL



UPPER GARDEN LEVEL

*BEDROOM 2 WARDROBE TO PENTHOUSE D7 ONLY

DIMENSIONS	88 SQ M	947 SQ FT
LIVING/DINING/KITCHEN	4.85M X 8.88M	15' 11" X 29' 1"
MASTER BEDROOM	4.18M X 3.44M	13' 9" X 11' 3"
BEDROOM 2	2.75M X 3.76M	9' 0" X 12' 4"

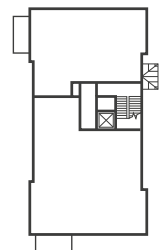
LOCATION



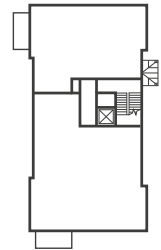
◀▶ - Measurement Points C - Cupboard U - Utility W - Wardrobe

Floorplans shown for The Mansions are for approximate measurements only. Exact layouts and sizes may vary. All measurements may vary within a tolerance of 5%. The dimensions are not intended to be used for carpet sizes, appliance sizes or items of furniture. Floorplans are sized to fit each page and are not to scale.

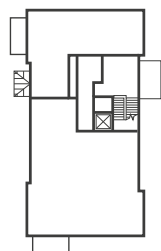
APARTMENT D1
TWO BEDROOM APARTMENT



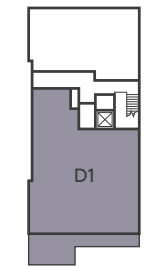
SECOND LEVEL



FIRST LEVEL



GROUND LEVEL



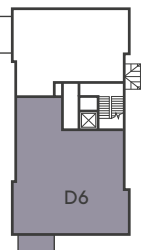
UPPER GARDEN LEVEL

DIMENSIONS	127.8 SQ M	1,376 SQ FT	LOCATION
LIVING/DINING/KITCHEN	7.75M X 6.19M	25' 5" X 20' 4"	
MASTER BEDROOM	2.88M X 4.37M	9' 5" X 14' 4"	
BEDROOM 2	3.60M X 3.29M	11' 10" X 10' 9"	
STUDY	3.45M X 2.80M	11' 4" X 9' 2"	
TERRACE			

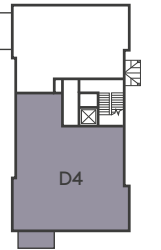
◄► - Measurement Points C - Cupboard U - Utility W - Wardrobe

Floorplans shown for The Mansions are for approximate measurements only. Exact layouts and sizes may vary. All measurements may vary within a tolerance of 5%. The dimensions are not intended to be used for carpet sizes, appliance sizes or items of furniture. Floorplans are sized to fit each page and are not to scale.

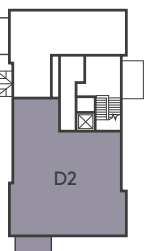
APARTMENTS D2, D4 & PENTHOUSE D6
THREE BEDROOM APARTMENTS & THREE BEDROOM PENTHOUSE



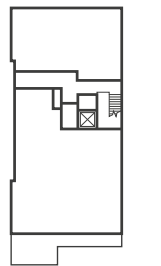
SECOND LEVEL



FIRST LEVEL



GROUND LEVEL



UPPER GARDEN LEVEL

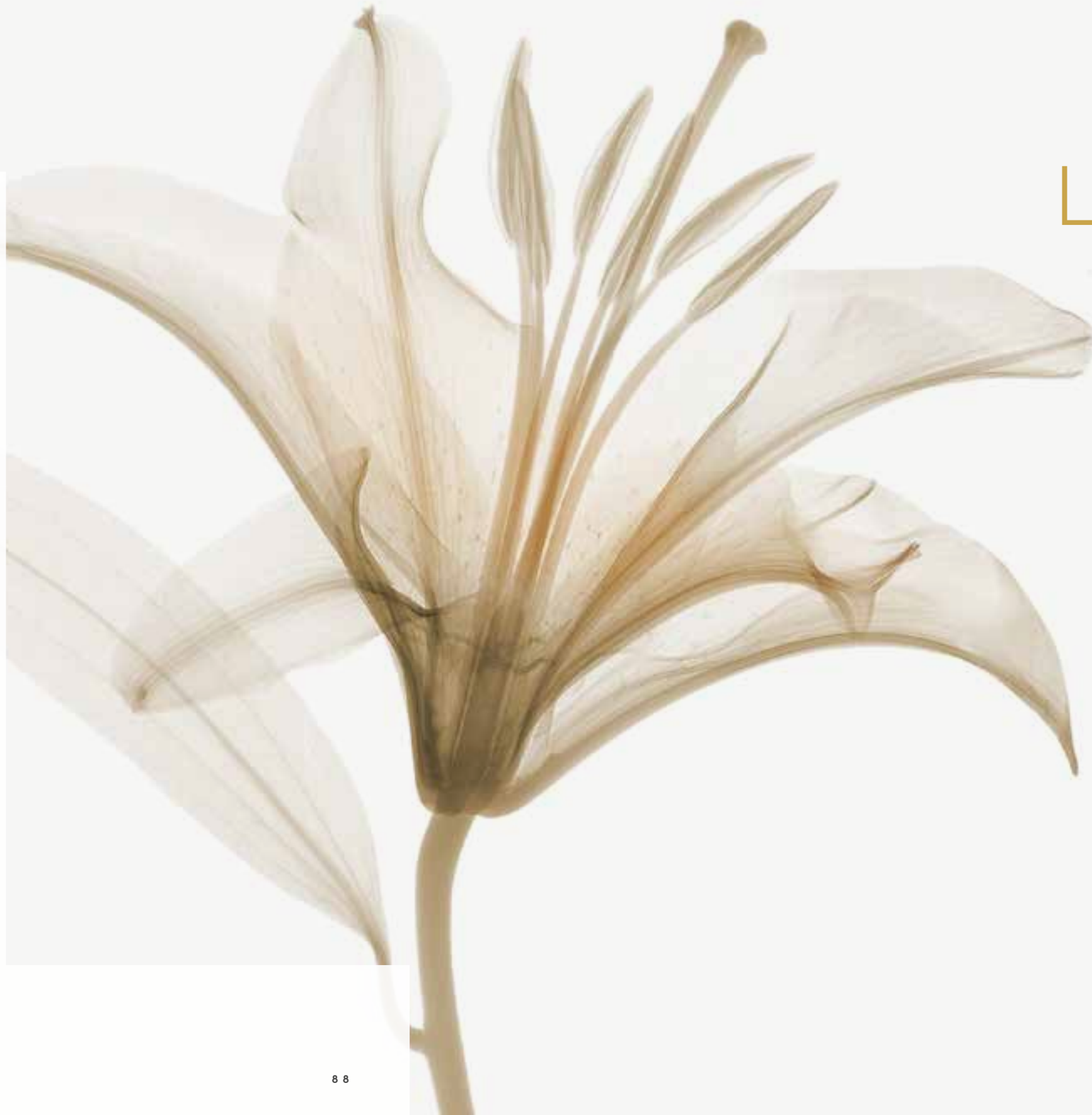
*BEDROOM 2 WARDROBE TO PENTHOUSE D6 ONLY

DIMENSIONS	132.3 SQ M	1,424 SQ FT	LOCATION
LIVING/DINING/KITCHEN	7.75M X 6.15M	25' 5" X 20' 2"	
MASTER BEDROOM	3.64M X 4.37M	11' 11" X 14' 4"	
BEDROOM 2	4.32M X 4.84M	14' 2" X 15' 11"	
BEDROOM 3	3.45M X 2.70M	11' 4" X 8' 10"	
BALCONY			

◄► - Measurement Points C - Cupboard U - Utility W - Wardrobe

Floorplans shown for The Mansions are for approximate measurements only. Exact layouts and sizes may vary. All measurements may vary within a tolerance of 5%. The dimensions are not intended to be used for carpet sizes, appliance sizes or items of furniture. Floorplans are sized to fit each page and are not to scale.

LANESBOROUGH HOUSE



APARTMENT FINDER



Computer Generated Image of The Mansions is indicative only

APARTMENT NO.	BEDROOMS	LEVEL	PAGE NO.
G1	2	Ground Level	95
G2	2	Ground Level	96
G3	1	First Level	93
G4	1	First Level	92
G5	2	First Level	94
G6 Penthouse	3	Second Level	97

SITE PLAN



The sitemap is indicative only and not to scale.

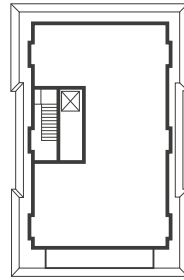
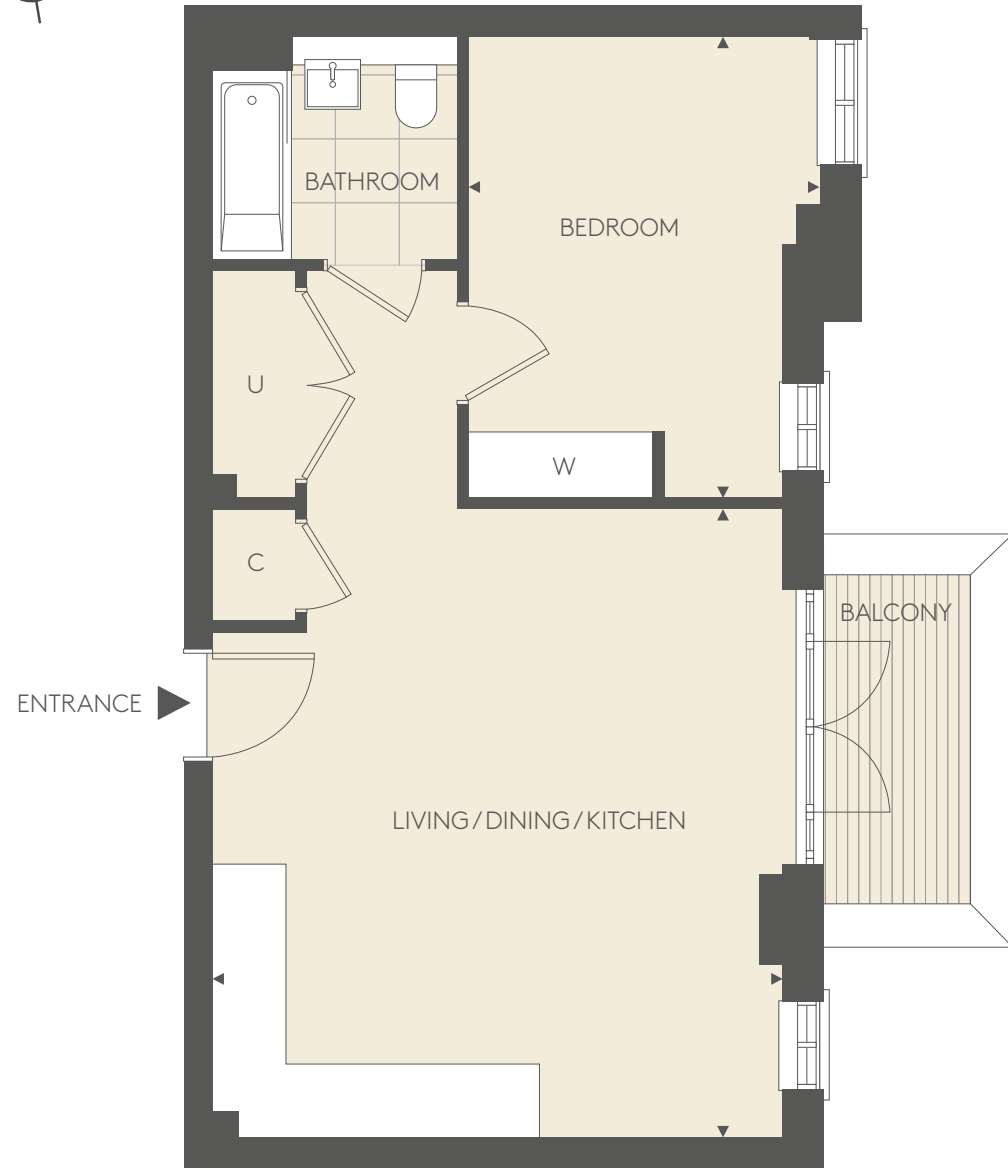
SOUTH ELEVATION



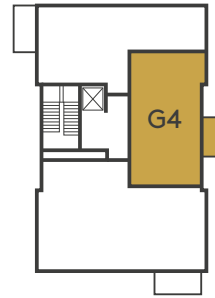
LANESBOROUGH HOUSE

APARTMENT G4

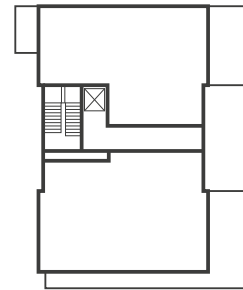
ONE BEDROOM APARTMENT



SECOND LEVEL



FIRST LEVEL



GROUND LEVEL

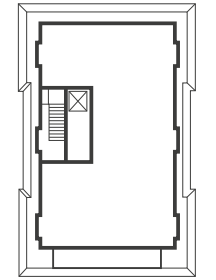
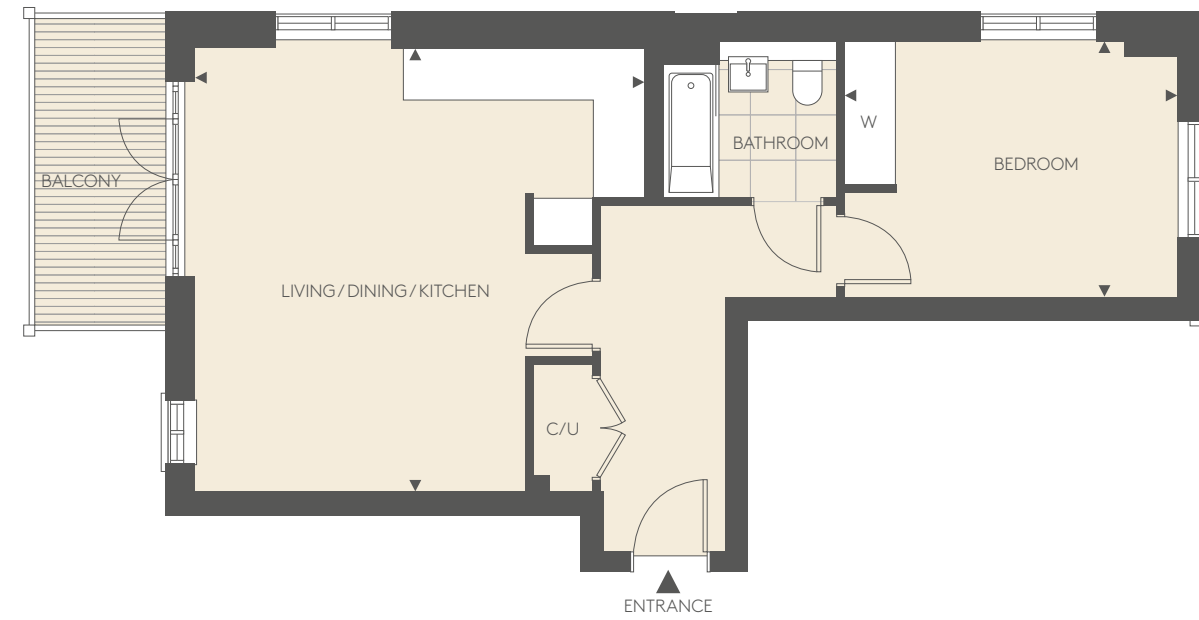
DIMENSIONS	51.3 SQ M	553 SQ FT	LOCATION
LIVING/DINING/KITCHEN	5.13M X 5.66M	16' 10" X 18' 7"	
BEDROOM	3.16M X 4.15M	10' 4" X 13' 8"	

◄► - Measurement Points C - Cupboard U - Utility W - Wardrobe

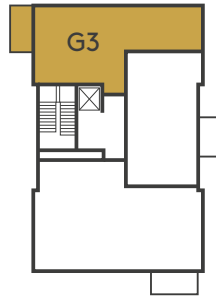
Floorplans shown for The Mansions are for approximate measurements only. Exact layouts and sizes may vary. All measurements may vary within a tolerance of 5%. The dimensions are not intended to be used for carpet sizes, appliance sizes or items of furniture. Floorplans are sized to fit each page and are not to scale.

APARTMENT G3

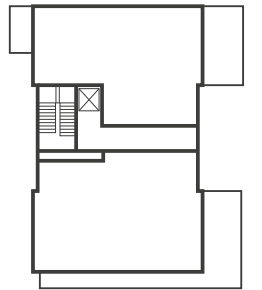
ONE BEDROOM APARTMENT



SECOND LEVEL



FIRST LEVEL



GROUND LEVEL

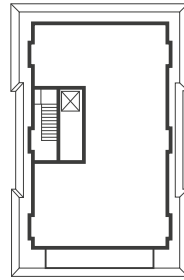
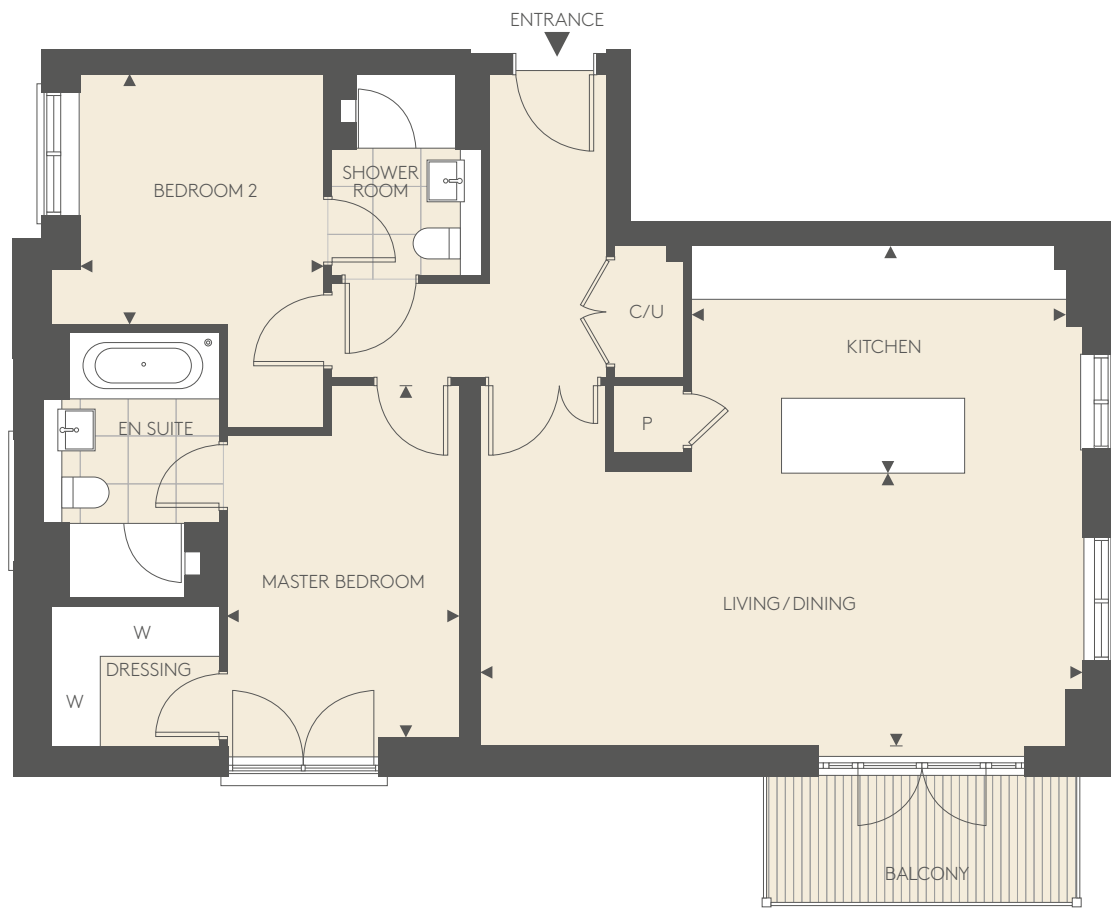
DIMENSIONS	58.1 SQ M	625 SQ FT	LOCATION
LIVING/DINING/KITCHEN	5.71M X 5.63M	18' 9" X 18' 6"	
BEDROOM	4.22M X 3.26M	13' 10" X 10' 8"	

◄► - Measurement Points C - Cupboard U - Utility W - Wardrobe

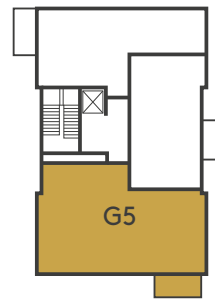
Floorplans shown for The Mansions are for approximate measurements only. Exact layouts and sizes may vary. All measurements may vary within a tolerance of 5%. The dimensions are not intended to be used for carpet sizes, appliance sizes or items of furniture. Floorplans are sized to fit each page and are not to scale.

APARTMENT G5

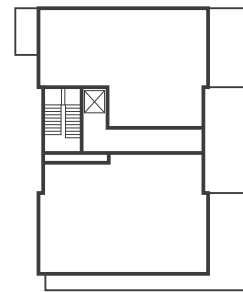
TWO BEDROOM APARTMENT



SECOND LEVEL



FIRST LEVEL



GROUND LEVEL

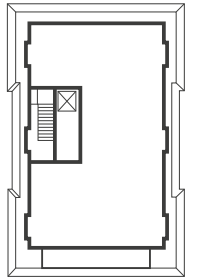
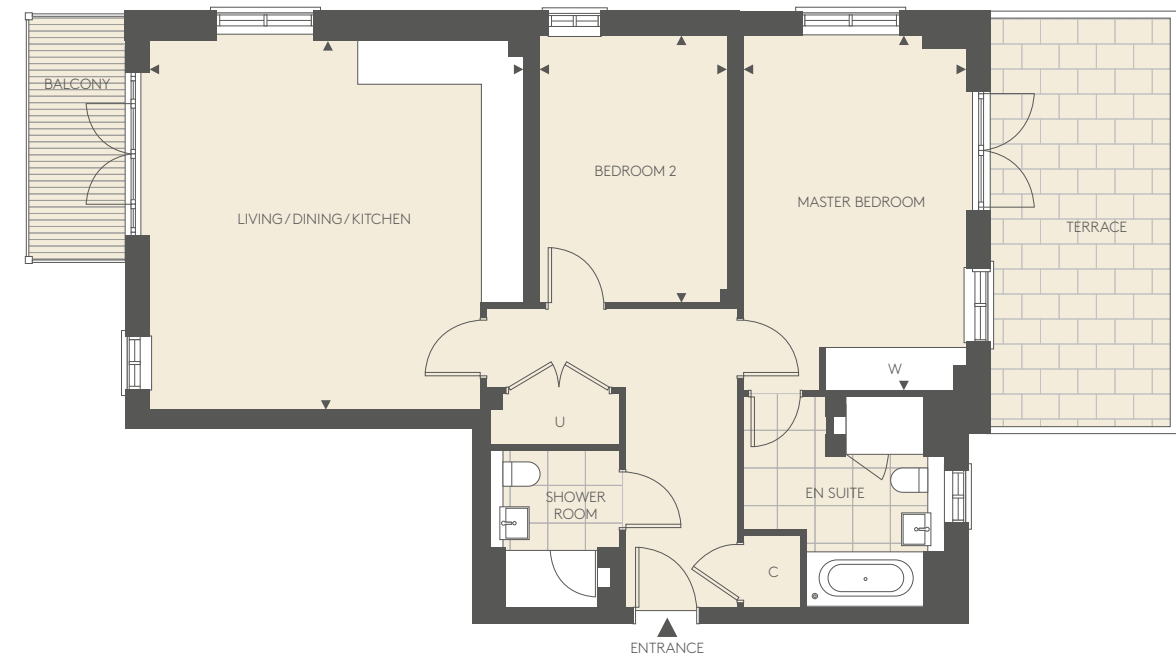
DIMENSIONS	88 SQ M	948 SQ FT	LOCATION
LIVING/DINING	7.23M X 3.29M	23' 9" X 10' 10"	
KITCHEN	4.50M X 2.72M	14' 9" X 8' 11"	
MASTER BEDROOM	2.80M X 4.23M	9' 2" X 13' 11"	
BEDROOM 2	2.93M X 3.00M	9' 7" X 9' 10"	

◄► - Measurement Points C - Cupboard U - Utility W - Wardrobe P - Pantry

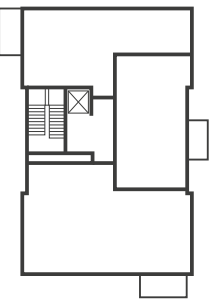
Floorplans shown for The Mansions are for approximate measurements only. Exact layouts and sizes may vary. All measurements may vary within a tolerance of 5%. The dimensions are not intended to be used for carpet sizes, appliance sizes or items of furniture. Floorplans are sized to fit each page and are not to scale.

APARTMENT G1

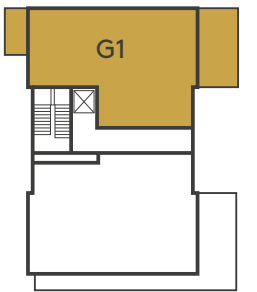
TWO BEDROOM APARTMENT



SECOND LEVEL



FIRST LEVEL



GROUND LEVEL

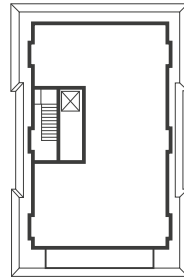
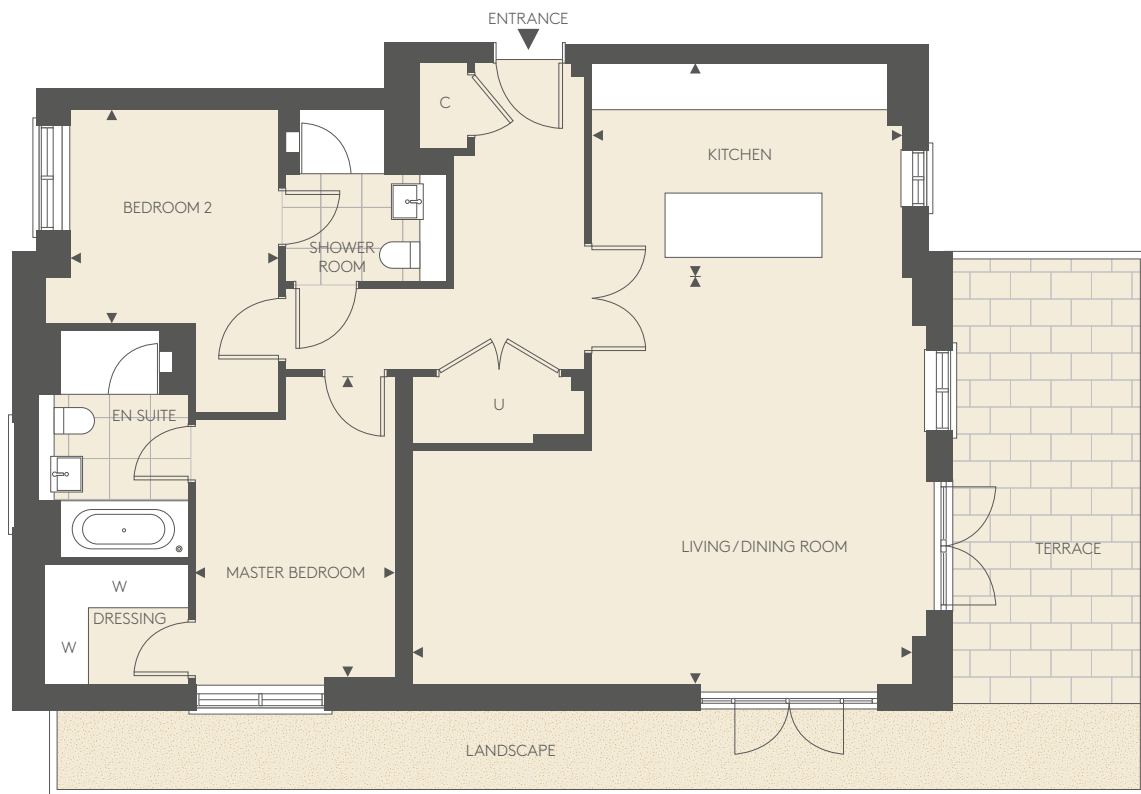
DIMENSIONS	92.3 SQ M	993 SQ FT	LOCATION
LIVING/DINING/KITCHEN	5.71M X 5.63M	18' 9" X 18' 6"	
MASTER BEDROOM	3.40M X 5.43M	11' 2" X 17' 10"	
BEDROOM 2	2.87M X 4.09M	9' 5" X 13' 5"	

◄► - Measurement Points C - Cupboard U - Utility W - Wardrobe

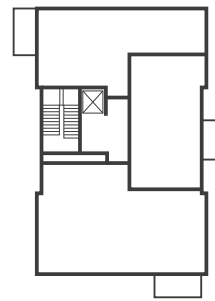
Floorplans shown for The Mansions are for approximate measurements only. Exact layouts and sizes may vary. All measurements may vary within a tolerance of 5%. The dimensions are not intended to be used for carpet sizes, appliance sizes or items of furniture. Floorplans are sized to fit each page and are not to scale.

APARTMENT G2

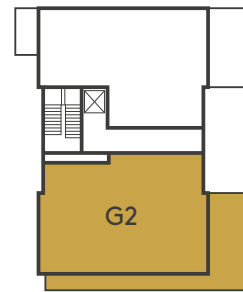
TWO BEDROOM APARTMENT



SECOND LEVEL



FIRST LEVEL



GROUND LEVEL

DIMENSIONS	103.6 SQ M	1,115 SQ FT
LIVING/DINING ROOM	7.03M X 5.72M	23' 1" X 18' 9"
KITCHEN	4.37M X 3.00M	14' 4" X 9' 10"
MASTER BEDROOM	2.80M X 4.23M	9' 2" X 13' 11"
BEDROOM 2	3.00M X 2.93M	9' 10" X 9' 7"

LOCATION

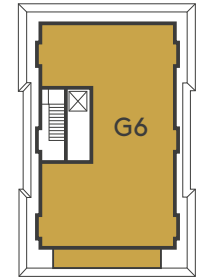


◄► - Measurement Points C - Cupboard U - Utility W - Wardrobe

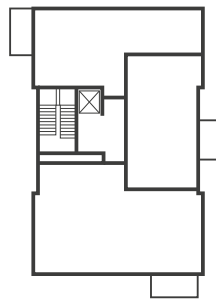
Floorplans shown for The Mansions are for approximate measurements only. Exact layouts and sizes may vary. All measurements may vary within a tolerance of 5%. The dimensions are not intended to be used for carpet sizes, appliance sizes or items of furniture. Floorplans are sized to fit each page and are not to scale.

PENTHOUSE G6

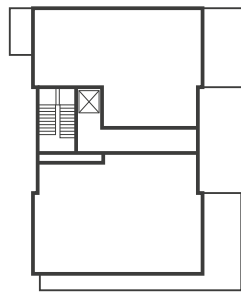
THREE BEDROOM PENTHOUSE



SECOND LEVEL



FIRST LEVEL



GROUND LEVEL

DIMENSIONS	131.5 SQ M	1,415 SQ FT
LIVING/DINING/KITCHEN	9.08M X 4.27M	29' 9" X 14' 0"
MASTER BEDROOM	4.25M X 3.09M	13' 11" X 10' 2"
BEDROOM 2	3.01M X 4.24M	9' 11" X 13' 11"
BEDROOM 3	3.65M X 2.86M	12' 0" X 9' 5"

LOCATION



◄► - Measurement Points C - Cupboard U - Utility W - Wardrobe

Floorplans shown for The Mansions are for approximate measurements only. Exact layouts and sizes may vary. All measurements may vary within a tolerance of 5%. The dimensions are not intended to be used for carpet sizes, appliance sizes or items of furniture. Floorplans are sized to fit each page and are not to scale.

DESIGNED TO HIGH SUSTAINABILITY STANDARDS

At The Mansions we have included a variety of features to reduce environmental impact and make it easier for you to live a healthy, sustainable lifestyle.

GREEN LIVING AND SUSTAINABLE DEVELOPMENT IS TOP OF OUR AGENDA

As a company, we are committed to reducing energy, water and waste on our construction sites, in our offices and in the homes that we build. Almost all of our developments are built on brownfield land and we always take care to protect and enhance biodiversity and natural habitats. Our homes include features to encourage sustainable living such as dual-flush WCs, recycling bins and energy efficient white goods.

A COMMITMENT TO CREATING SUSTAINABLE COMMUNITIES

Berkeley's homes and developments are not just built for today. They are designed to enhance the neighbourhoods in which they are located permanently. We achieve this through our commitment to excellence in design, sensitive landscaping, sympathetic restoration, and impeccable standards of sustainability.

We aim to address the needs not only of our customers but their neighbours and the broader community of which they are a part. It is a long-term view: we want to create exceptional places for people to live, work and relax in, and build communities that will thrive today and for years to come.

ENERGY EFFICIENCY

The homes are designed to be very efficient in their use of energy, this will lead to lower energy consumption and reduced carbon dioxide emissions. Features installed include:

- High levels of thermal insulation and airtightness
- 100% low energy and LED lighting
- A and A+ white goods throughout
- A CHP powered communal heat network which helps reduce carbon emissions

REDUCING WATER USE

Water saving fixtures and fittings include water efficient taps, showers and dual flush toilets along with water efficient white goods.

REDUCING WASTE

Integrated recycling bins are provided in kitchens (usually under sinks) to make it easy for residents to segregate and recycle their waste.

MORE NATURE

At Berkeley we ensure that all of our developments support the existing nature and wildlife within the area. At The Mansions there is an abundance of nature that we have committed to protecting and enhancing, including:

- A number of beautiful protected mature trees
- An area of protected acid grassland
- Bat-friendly bollard lighting to support the safe migration of local bats

SUSTAINABLE TRAVEL

Travelling sustainably has never been easier, the car park contains secure cycle storage and has the provision for the future installation of electrical car charging points. In addition, there is a bus stop located within a short walk providing quick and easy access to Wimbledon and Raynes Park within 15 minutes.



Proud to be a member of the Berkeley Group of Companies

Berkeley
Designed for life

St Edward
Designed for life

St George
Designed for life

St James
Designed for life

St Joseph
Designed for life

St William
Designed for life

A COMMITMENT TO THE FUTURE

Over the years, the Berkeley Group has won many prestigious awards for the quality, design and sustainability of its developments.

Our Vision is Berkeley's plan for the business, designed to raise standards higher still. Our goal is to be a world-class company creating successful, sustainable places where people aspire to live.

We take our responsibilities towards our customers, the environment, the workforce and the communities in which we work very seriously. Our plan for the business has five areas of focus:



CUSTOMERS, HOMES, PLACES, OPERATIONS, OUR PEOPLE

AN EXCEPTIONAL CUSTOMER EXPERIENCE

We aim to put customers at the heart of our decisions. Dedicated Sales Teams will provide exceptional service throughout the buying process, and teams will manage the customer relationship from exchange of contracts through to completion, delivery of the new home and after occupancy.

HIGH QUALITY HOMES

When you buy a new home from Berkeley you can be safe in the knowledge that it is built to very high standards of design and quality and has low environmental impact. We meet specific space standards for new homes and aim to deliver a home which has fibre broadband infrastructure.

GREAT PLACES

We seek to create beautiful, successful places characterised by the quality of their design, external spaces, transport and access to jobs and amenities. These are places where people choose to live, work and spend their time and which directly encourage people's wellbeing and quality of life.

EFFICIENT AND CONSIDERATE OPERATIONS

We reduce the impact of the construction process on the local community by registering all of our sites with the Considerate Constructors Scheme. We set targets to reduce water, energy and waste. We work with our supply chain to ensure high quality services and materials are consistently provided.

A COMMITMENT TO PEOPLE AND SAFETY

Safety is a high priority on all of our construction sites. We also aim to have a positive impact on society and enable young and unemployed people to get into work through our support of the Berkeley Foundation.

THE BERKELEY FOUNDATION

Berkeley takes social responsibility very seriously. In 2011 we set up the Berkeley Foundation, with the aim of supporting Britain's young people and their communities.

We do this through a number of partner charities that tackle some of the most pressing social problems affecting young people today, including homelessness and unemployment. The money raised comes part from the Berkeley Group, and also through the tireless and inventive efforts of our staff.

We have set a goal for the Berkeley Foundation to invest £10 million over the next four years to support young people and their communities. Every penny will be spent on charitable activities and worthy causes to ensure that maximum benefit is achieved.

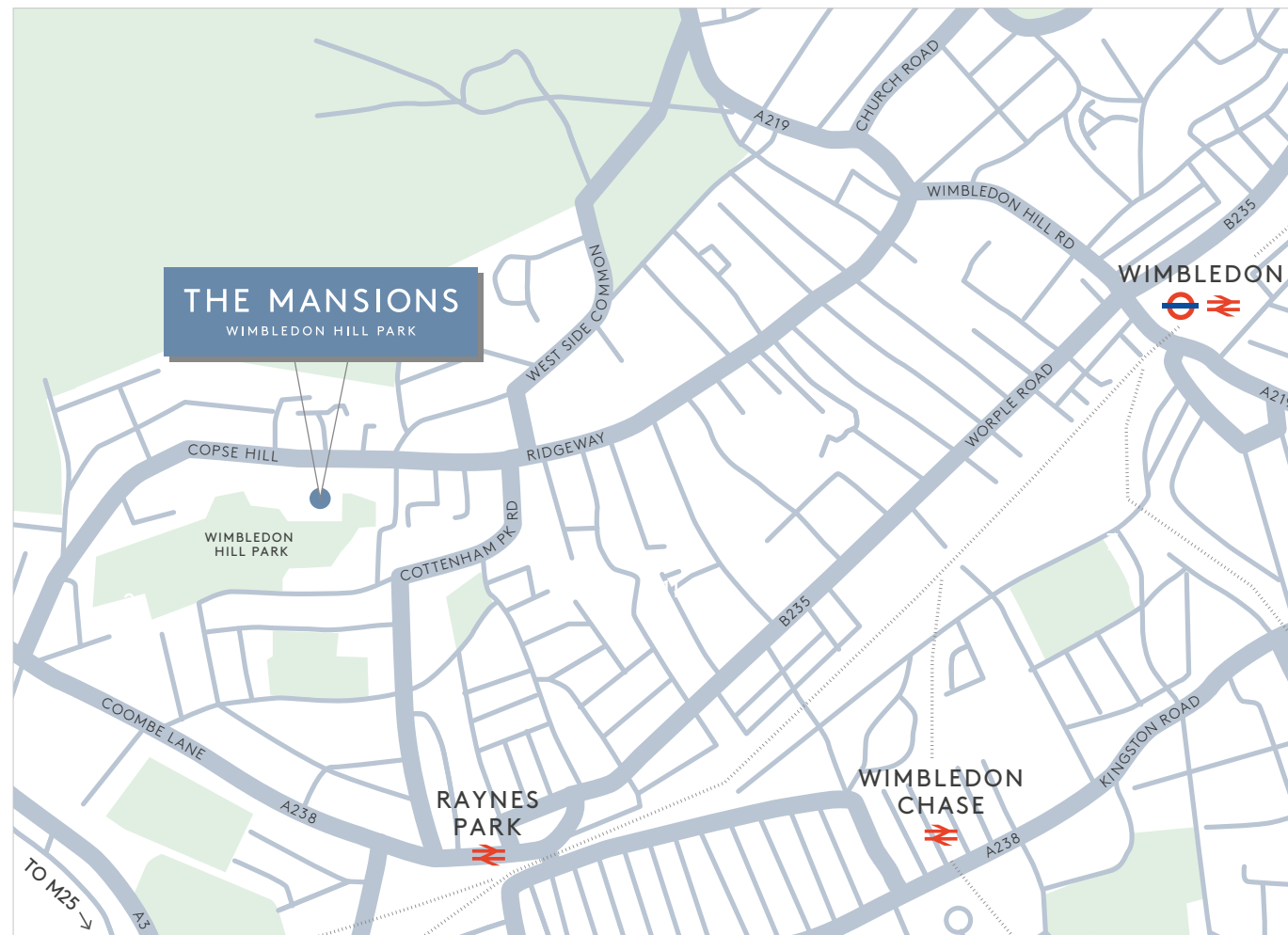
www.berkeleyfoundation.org.uk
www.berkeleygroup.co.uk



CONTACT DETAILS

The Mansions Sales and Marketing Suite,
Paxton House, 6 Chambers Park Hill, London SW20 0FS

Open daily 10am to 6pm, Thursday 10am to 8pm
020 7118 8895 | Sales@The-Mansions.co.uk



Map not to scale and is indicative only

The Mansions was granted planning permission on 6th March 2018 by the London Borough of Merton. The planning application number is 16/P4853. Through the purchase of a property at The Mansions, the buyer is acquiring an apartment with a 999-year leasehold from January 2015 with associated rights to use the communal areas as set out in the lease. Purchasing uncompleted properties situated outside Hong Kong is complicated and contains risk. Applicants should review all relevant information and documents carefully before making a purchase decision. If in doubt, please seek independent professional advice before making a purchase decision.

All distances are approximate and sourced from Google.co.uk/maps. Address is indicative and to be used for marketing purposes. The information in this document is indicative and is intended to act as a guide only as to the finished product. Computer-generated images and photography are indicative only and subject to change. Accordingly, due to the Berkeley policy of continuous improvement, the finished product may vary from the information provided. These particulars should not be relied upon as statements of fact or representations and applicants must satisfy themselves by inspection or otherwise as to their correctness. This information does not constitute a contract or warranty. The dimensions given on plans may vary within a tolerance of 5% and are not intended to be used for carpet sizes, appliance sizes or items of furniture. The Mansions is a marketing name and will not necessarily form part of the approved postal address. Applicants are advised to contact Berkeley to ascertain the availability of any particular property. U077/05CA/0619



THE-MANSIONS.CO.UK

Berkeley
Designed for life